



*Research Institute of Geodesy, Topography and Cartography,  
CZ 250 66 Zdíby 98, fax: +4202-84890056, e-mail: vugtk@vugtk.cz*

# Implementation of the new CLGE Website

Milan Talich, Václav Slaboch, Maria Stumpfova

*Milan.Talich@vugtk.cz*

CLGE GA London, 2 - 4 October 2003

## Requirements - as approved by SC meeting 01-2002, Innsbuck

- the web site consists of 3 layers:
  - Layer 1: the official CLGE site
  - Layer 2: the official presentation of each member country
  - Layer 3: the national version of the CLGE
- the simplest and cheapest solution possible

CLGE GA London, 2 - 4 October 2003

## Layer 1 – official CLGE web-site:

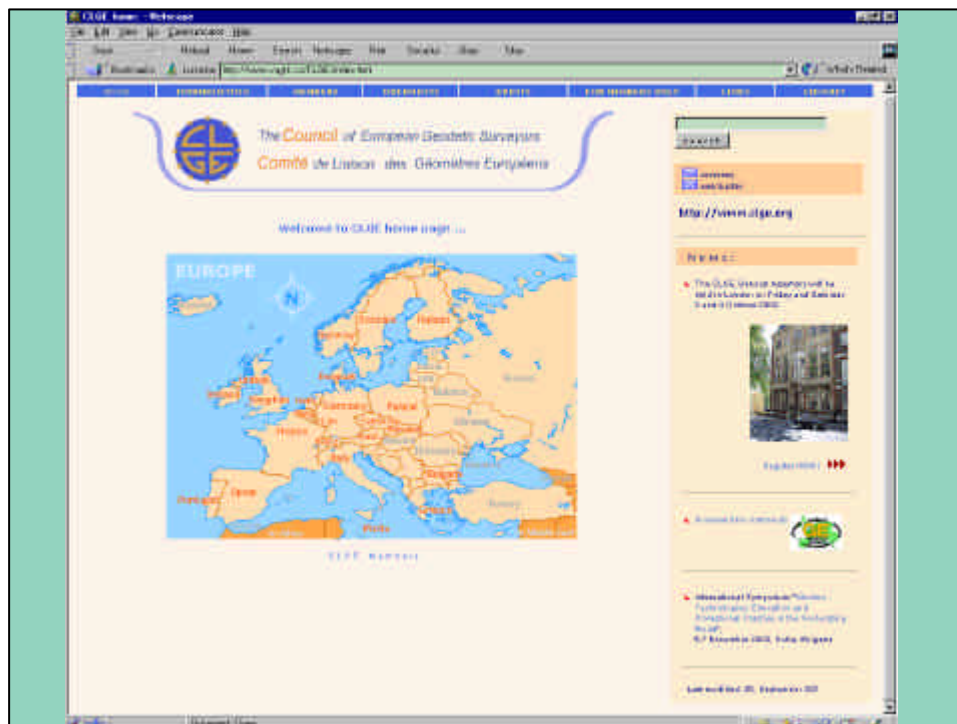
- contains supplied presentations and all the **official information** (CLGE files)
- full-text search machine
- The basic divisions are:
  - **HOME** – welcome page containing also news
  - **INTRODUCTION** – basic information on CLGE
  - **MEMBERS**– list of members with references to their web-site (to Layer 2)
  - **DOCUMENTS** – documents, publications,...
  - **EVENTS** – information on symposia and conferences organised by CLGE
  - **FOR MEMBERS ONLY** –non-public information assigned for CLGE members and accessible only through an appropriate login/password (*clge/clge*)
  - **LINKS** – references to interesting web sites related to CLGE activities
  - **CONTACT** - contacts

CLGE GA London, 2 - 4 October 2003

## Layer 1 – official CLGE web-site:

- hosted at the server [www.vugtk.cz](http://www.vugtk.cz)
- updated and developed by the VÚGTK webmaster using information from general secretary (GS)
- documents for display sent by the GS to the VUGTK may be in any electronic form (\*.rtf, \*.doc, \*.xls,...). The CLGE webmaster has convert these documents into WWW form and display them on the web
- The back-up of the web site is assured daily in order to protect the data from any losses or damage due to illegal activities

CLGE GA London, 2 - 4 October 2003



## **Layer 2 – official presentation of each member country:**

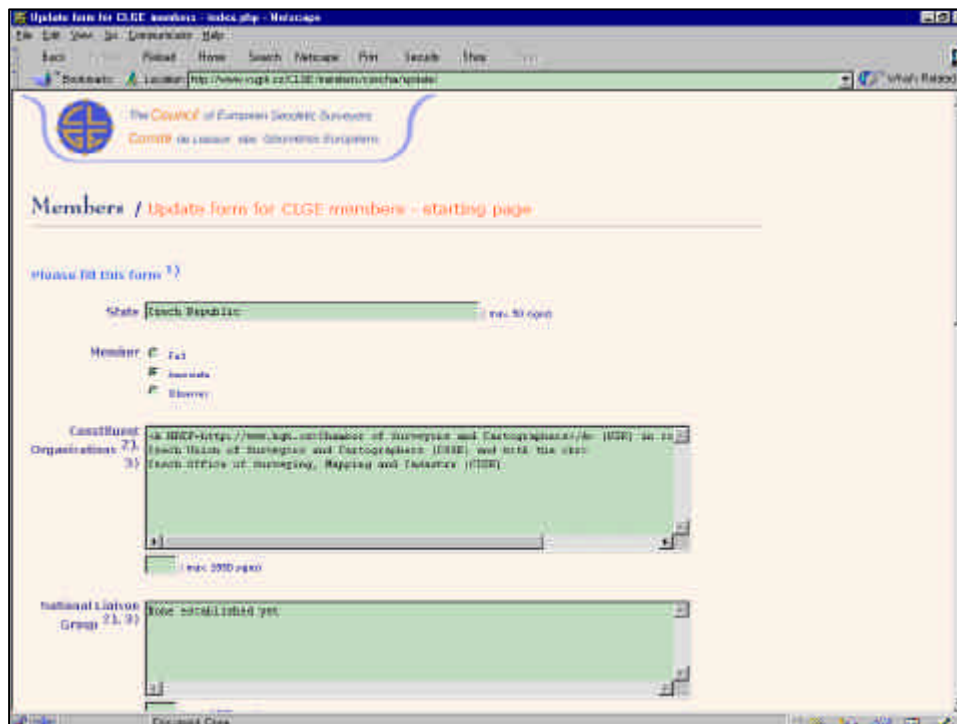
- **updated by the member organisations** and supervised by the GS
- **uniformity** of official presentations of each member country is assured by a form designed for this purpose
- hosted et the VUGTK server
- every member country has its own **login and password** for updating their data

CLGE GA London, 2 - 4 October 2003

## **Layer 2 – official presentation of each member country:**

- using of an **editing system** enabling updating the data of each member country using a special form. Updated WWW pages are automatically generated.
- **The form for editing** website is at the address:  
<http://www.vugtk.cz/CLGE/members/country/update/>
- Indexing (searching) is possible using some classical full-text search machines (Google, HOTBOT, AltaVista,...).

CLGE GA London, 2 - 4 October 2003



### Layer 3 –national versions of CLGE website:

- no member country has its own national version of CLGE web site yet
- **managed by individual member countries**
- should be hosted on server in the relevant country.
- should contain national versions of the CLGE papers, etc.
- VUGTK can participate in creation of these web sites only as a consultant

## Technical specifications of the www.vugtk.cz server:

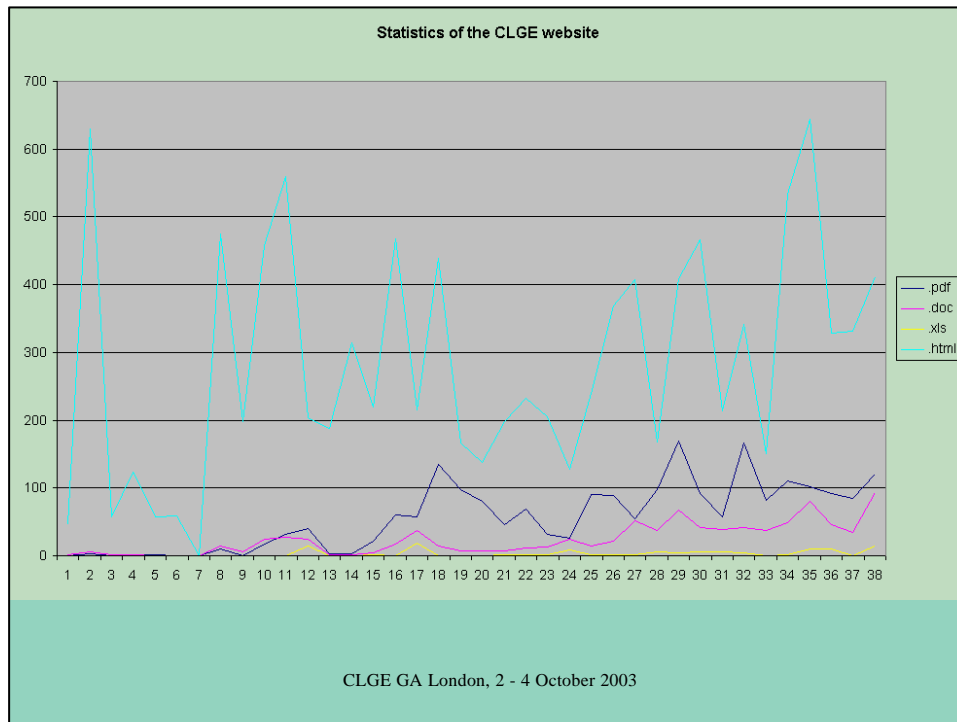
- **OS:** Linux - Red Hat
- **WWW server:** Apache, PHP, MySQL (ASP, MS SQL is not possible)
- **Connectivity:** 2 Mbit/s to the CESNET2, in near future 10 Mbit/s,  
(<http://www.cesnet.cz/english/>), then 1,2 Gbit/s to the European net Géant  
(<http://www.dante.net/geant/>)

CLGE GA London, 2 - 4 October 2003

## Statistics of the CLGE website:

- in 2003 already 13 954 documents required from web site  
(10 791 HTML, 2 138 PDF, 909 DOC, 116 XLS)
- every week in average 367 documents required from website,
- the CLGE website contains 831 documents (597 HTML+PHP, 118 PDF, 105 DOC, 11 XLS)

CLGE GA London, 2 - 4 October 2003



### **Some remarks and questions to the conclusion:**

- each member country should have their own webmaster (person responsible) with basic web skills for maintenance of the layer 3
- each member country should update their layer 2 with using the updating form, no web skills necessary

## **Futher plan for development :**

- new search engine,
- new high speed connection to the European Research and Development Network,
- supporting of national webmasters,
- discussion platform to important documents (forms,...),
- website map,
- on-line statistics about who is reading the CLGE website,....,
- multilingualism with help of national websites (layer 3),
- conferences, FAQ.

CLGE GA London, 2 - 4 October 2003



*Research Institute of Geodesy, Topography and Cartography,*  
CZ 250 66 Zdíby 98, fax: +4202-84890056, e-mail: [vugtk@vugtk.cz](mailto:vugtk@vugtk.cz)



# Thanks for your attention

***Milan.Talich@vugtk.cz***

CLGE GA London, 2 - 4 October 2003