



The Council of European Geodetic Surveyors
Comité de Liaison des Géomètres Européens



CLGE
Working for a profession

A general view

Place, Date



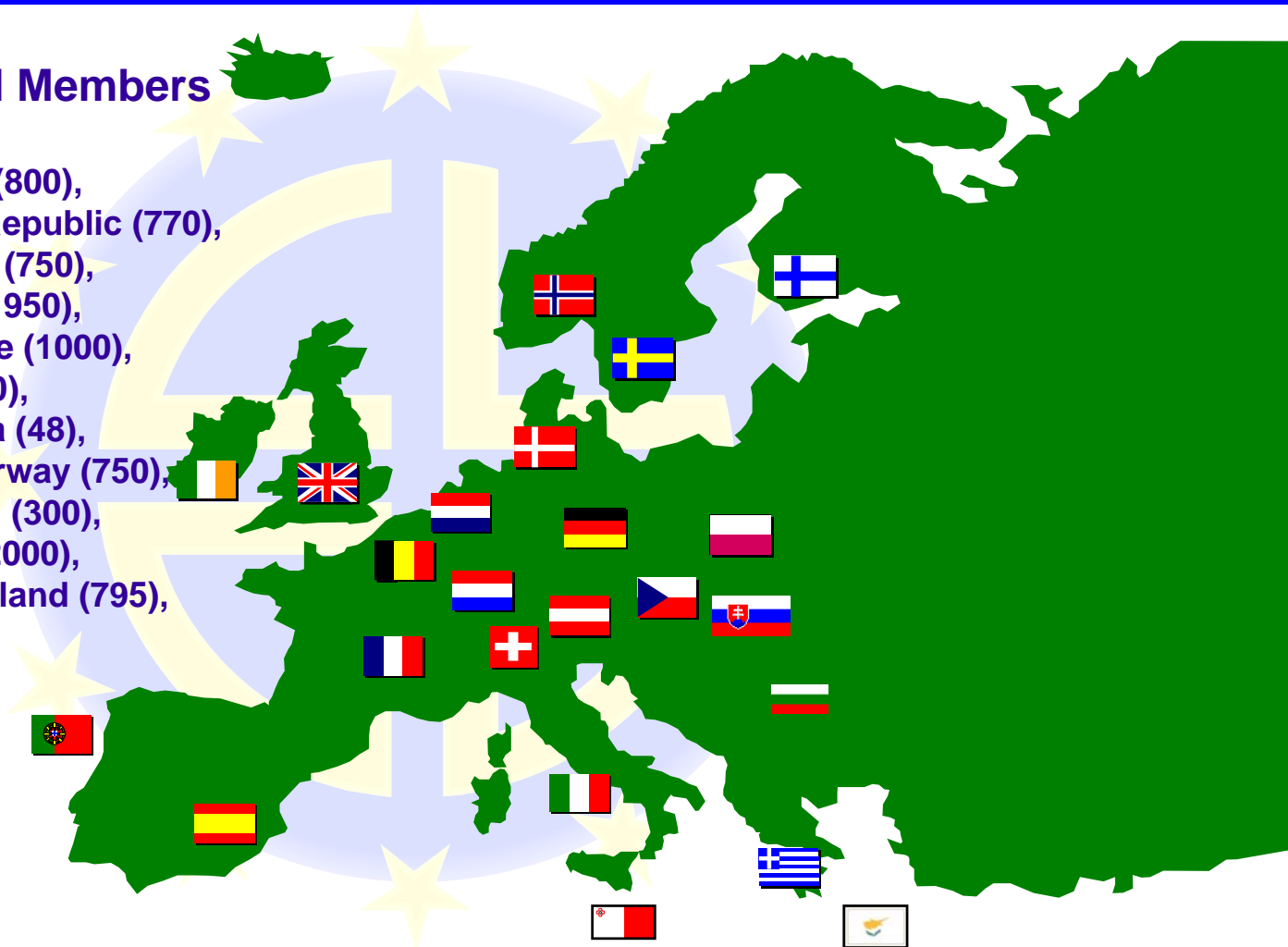
The Council of European Geodetic Surveyors

Comité de Liaison des Géomètres Européens

23 CLGE Principal Members

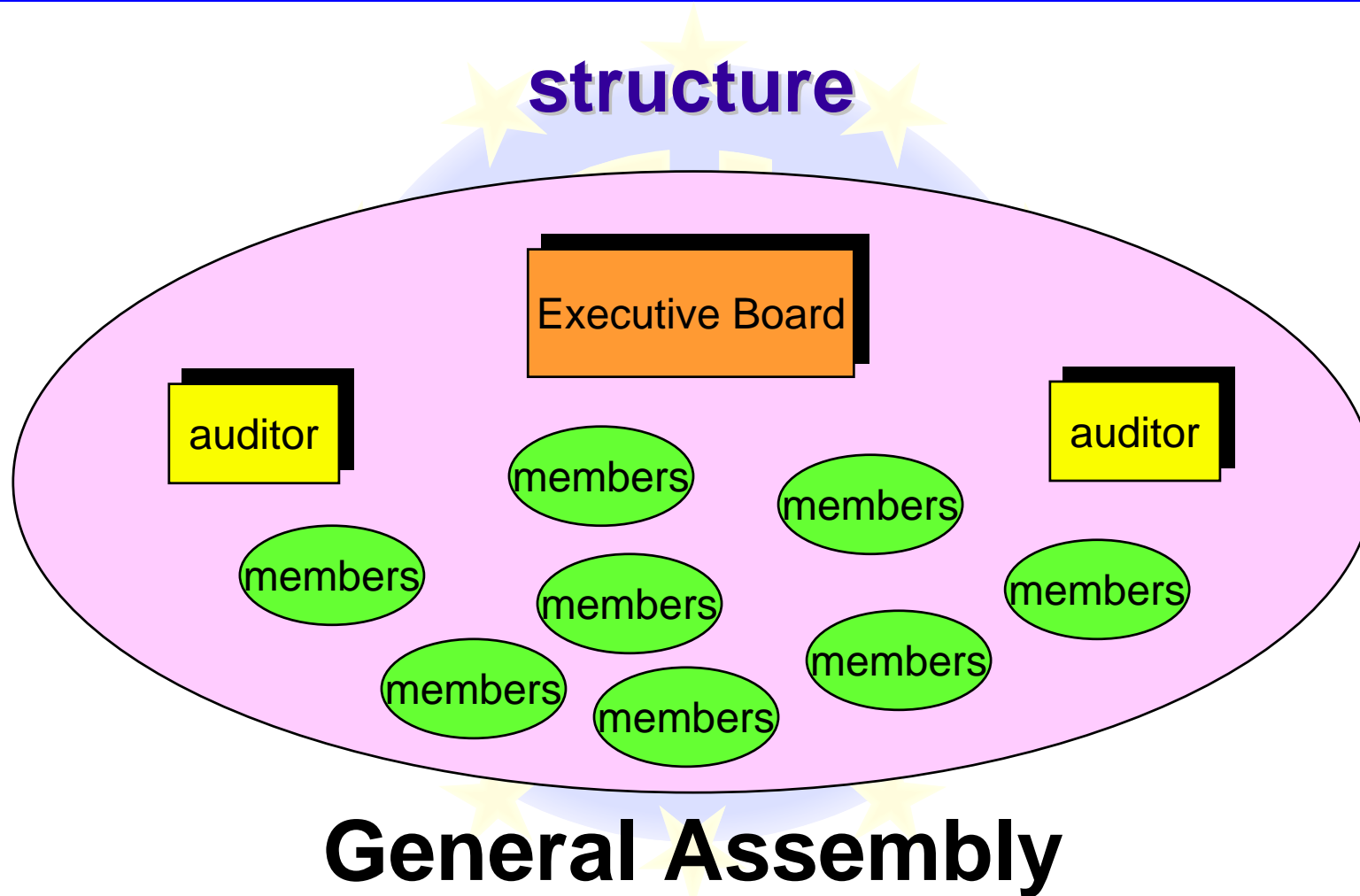
Austria (670), Belgium (800),
Bulgaria (200), Czech Republic (770),
Cyprus (120), Denmark (750),
Finland (700), France (1950),
Germany (3500), Greece (1000),
Ireland (340), Italy (3000),
Luxembourg (35), Malta (48),
Netherlands (1100), Norway (750),
Poland (1500), Portugal (300),
Slovakia (619), Spain (2000),
Sweden (1300), Switzerland (795),
United Kingdom (3000)

total 25 247





The Council of European Geodetic Surveyors Comité de Liaison des Géomètres Européens

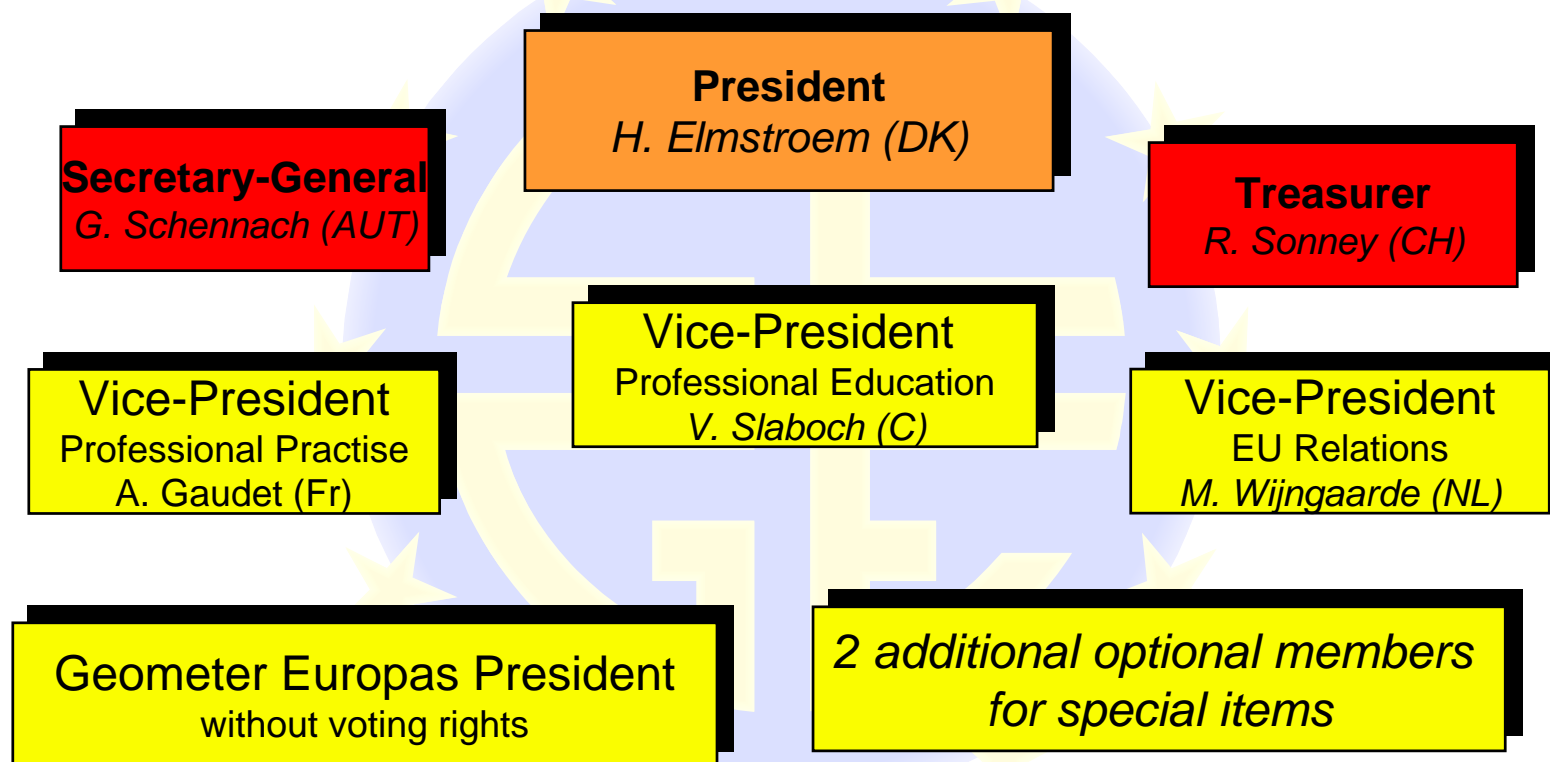




The Council of European Geodetic Surveyors

Comité de Liaison des Géomètres Européens

Executive Board



A general view

Place, Date



The Council of European Geodetic Surveyors

Comité de Liaison des Géomètres Européens

Objectives

To represent the interests of the profession

- ✓ Participation in legislation processes at European level

CEPLIS / Economic and Social Council

ESF / European Commission and Social Dialogue

- ✓ Co-operation with and assistance to the EC for regulations on mutual recognition of qualifications

Unit of DG Internal Market

MEP



The Council of European Geodetic Surveyors

Comité de Liaison des Géomètres Européens

Objectives

Providing a forum for professional issues

- ✓ Liaison between other Organisations
FIG, GE, WPLA
- ✓ Assist recognition of associations as regulated professional bodies
national governments
- ✓ Produce reports on practice of profession in Europe
“Market Report” published in September 2003
“Quality Assurance in the Geodetic Surveying Profession in the EU” to be published



The Council of European Geodetic Surveyors
Comité de Liaison des Géomètres Européens

Challenges for the future

EU **Directive** on mutual recognition

Licensing procedures / qualification

Open **new markets** to the profession

Enhance **Private-Public Partnership** models

Participate in establishment of **NSDI/ESDI**

Identify impacts on profession by **PCC**

Contribute to **e-government** procedures