



**The Council of European Geodetic Surveyors
Comité de Liaison des Géomètres Européens**



CLGE, VP Mark Wijngaarde

Sofia, Bulgaria, 9-10 Nov 2006

**THE CLGE RELATED TO THE “MODERN TECHNOLOGIES,
EDUCATION AND PROFESSIONAL PRACTISE IN
GEODESY IN EUROPE”**

By Mark R. Wijngaarde

**Dear Professor Georgi Milev
Dear Members of the Bulgarian Union of Surveyors and
Land Managers
Dear colleagues and guests
Ladies and gentlemen,**

**On behalf of the Council of the European Geodetic
Surveyors (CLGE) it is a great honour for me to be invited
to make this greeting speech on this official opening of this
international symposium.**



The Council of European Geodetic Surveyors
Comité de Liaison des Géomètres Européens

CLGE

Working on a profession

The International Symposium „Modern technologies, education and professional practise in geodesy and related fields“

Sofia, Bulgaria, 9-10 November 2006

CLGE, VP Mark Wijngaarde

Sofia, Bulgaria, 9-10 Nov 2006

The title of this greeting speech is not so impressive, as you may see I just copied the symposium name and attached it to the CLGE.

For most of you CLGE, while the Bulgarian Union of Surveyors and Land Managers is a member of this organization, is a well known European Organization,... maybe for some of you , to be true I don't hope so....., the CLGE and her goals is not so well known.

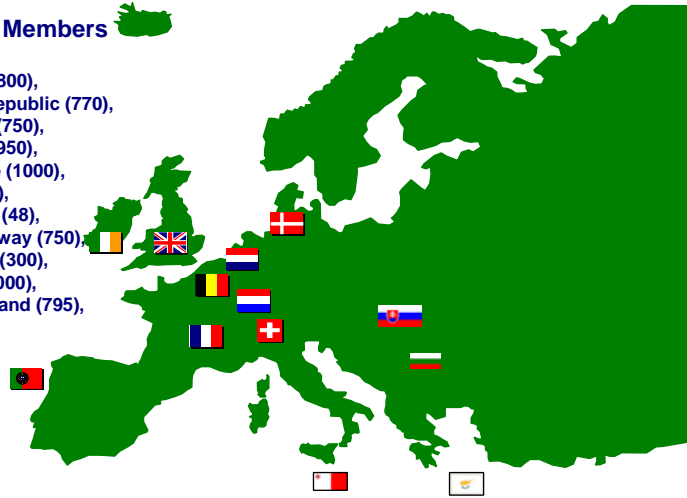


The Council of European Geodetic Surveyors
Comité de Liaison des Géomètres Européens

23 CLGE Principal Members

Austria (670), Belgium (800),
Bulgaria (200), Czech Republic (770),
Cyprus (120), Denmark (750),
Finland (700), France (1950),
Germany (3500), Greece (1000),
Ireland (340), Italy (3000),
Luxembourg (35), Malta (48),
Netherlands (1100), Norway (750),
Poland (1500), Portugal (300),
Slovakia (619), Spain (2000),
Sweden (1300), Switzerland (795),
United Kingdom (3000)

total 25 247



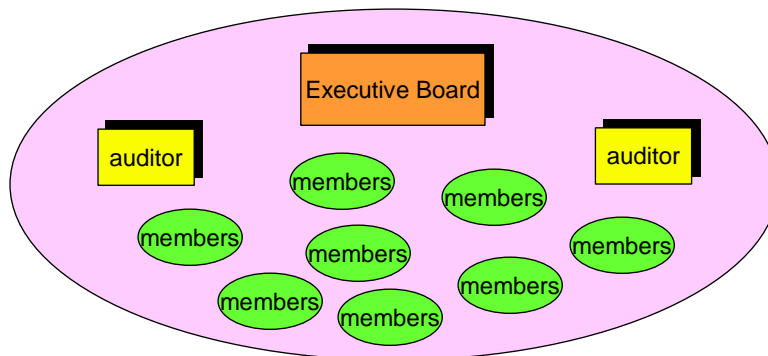
CLGE, VP Mark Wijngaarde

Sofia, Bulgaria, 9-10 Nov 2006

Therefore I take the challenge to put CLGE at this moment and during this symposium in the spotlight, in this moment I will compress the purpose and objectives of the CLGE in a nutshell, for additional background information I may refer to the CLGE Flyer which you can find in your conference bags and also to my other presentation “*CLGE heading East*” in which the activities of CLGE will be discussed and presented in a power point presentation.



Structure



General Assembly

CLGE, VP Mark Wijngaarde

Sofia, Bulgaria, 9-10 Nov 2006

The CLGE Executive Board and CLGE-Delegates of the geodetic surveyors in 23 European States, which includes nowadays the 20 EU member States, together with Norway, Switzerland and Bulgaria has the purpose to represent and promote, among other things like in general spoken, the interest of the geodetic surveying profession and to be more specific to promote *modern technology, education and professional practise in geodesy and related fields* in the private and public sector in Europe.

In the frame of the title of this symposium “*Modern technology, education and professional practise in geodesy and related fields*”, focussing on the mentioned modern technology we can assume, that modern technology is the base of the geo-information development of this decade.

Looking backwards, long time ago, our profession is one of the eldest professions in human history, already in the époque of the Pharaohs in Egypt, thousands of years ago our predecessors, the so called Harpedonaptae, what

means “Rope puller”, were working as land surveyors in the public service of the Pharaohs.



The Council of European Geodetic Surveyors
Comité de Liaison des Géomètres Européens



CLGE, VP Mark Wijngaarde

Sofia, Bulgaria, 9-10 Nov 2006

As high-ranking civil servant, they had full responsibility for the registration of land, to take care of the land tax collection and the reconstruction of the legal borders of the plots, after the yearly flooding of the Nile.



The Council of European Geodetic Surveyors
Comité de Liaison des Géomètres Européens



CLGE, VP Mark Wijngaarde

Sofia, Bulgaria, 9-10 Nov 2006

As far as we know our predecessors did not always had a long life, when their “boss” the Pharaoh died, it was a tradition that all the wives and all high ranking civil servants were cremated too, so they could be also at the service of the beyond life of the Pharaoh.



The Council of European Geodetic Surveyors
Comité de Liaison des Géomètres Européens



CLGE, VP Mark Wijngaarde

Sofia, Bulgaria, 9-10 Nov 2006

Also during the expansion of the Roman emporium in Europe, beside to the Caesar the Roman land surveyor, the agrimensor, was one of the most important man in the Roman legion, while he had to measure and to map the conquered land and had to divide the land into parcels, the so called “centuriatetios” for the veterans, the colonists, the emporium and the Romans themselves. This “centuriatetios” were the granaries for the Roman legions.



**The Council of European Geodetic Surveyors
Comité de Liaison des Géomètres Européens**



CLGE, VP Mark Wijngaarde

Sofia, Bulgaria, 9-10 Nov 2006

Since those times and nowadays, many changes and improvements in our profession had taken place, special in the last 50 years, the change over from the analogue into the digital époque, by the introduction of satellites,



CLGE, VP Mark Wijngaarde

Sofia, Bulgaria, 9-10 Nov 2006

developments in space, global position systems, computer technology, lasers, sensors, nanotechnology, telecommunication, virtual reality, internet and last but not least the globalization had and have overwhelming influence on our profession.

An example of these new developments of the last years is the demand of national spatial geo-data and many countries in Europe and also outside Europe had the feeling of the global drive towards creating national spatial geo-data, and due to the Executive Order no. 12906 of the ex president Clinton of the USA in 1994, the start signal was given to create this national spatial geo-data and to start, a national spatial geo-information infrastructure.



But why there is nowadays such a great demand for spatial geo-data?

The experience has taught us that the improvement and innovation of a national spatial geo-information system and the know-how and knowledge about the using and implementation of this information is one of the most important pillars of a structural and efficient government and a powerful trade and industrial sector.

The experience of this development of a national geo-information system has learned us, due to the technical, organisational, legal and political dimensions, that we are facing a very complex aspect.

Each country will discover that the chosen strategy for a set up of a NSDI and the implementation for their use will be almost unique and completely different compared with the national geo-information systems of other countries, due to the national requirements, specifications, the national specific technical input, the structure of the executive organization, the national laws and regulations

and last but not least the political circumstances and available possibilities.

For the preparation and set up of such a national spatial geo-information system there are some components to be considered, by example:

- **Which national spatial data are already available?**
- **Who is responsible for those geo data?**
- **Which national and European regulations for collecting and setting up of a national data base do exist?**
- **What is the role and rules of international organizations in this world of spatial data collection?**
- **Are there any national and /or European standards available for the exchange of spatial data?**
- **Will the wheel be invented again or are there already any usable and available national and international technologies to carry out this project?**
- **Strategy, is the national strategy compatible with the strategy of the European strategy and regulations for the development of spatial data sets?**

Of course the result of the past 12 years opens also some critical remarks, like:

- **Creation of Sid's is an open pit for lots of talk; some of them are useful to improve the system , other discussions just cause delays and frictions in the further development**
- **political and personnel posturing effects**
- **too less involvement of the wider GI stakeholder community**
- **the drive to invent everything once again**

As you may see, my dear colleagues and friends, my introduction starts with some history but also many open standing questions and also some critical remarks.

I hope this seminar “*Modern technology, education and professional practise in geodesy and related fields*” will contribute to find suitable answers, practical solutions and may also support the further development of the position in this process of the Bulgarian Land Surveyor and Land Managers.



The Council of European Geodetic Surveyors
Comité de Liaison des Géomètres Européens

**Thank you
for your attention,
enjoy your days
and have a
fruitful symposium**

CLGE, VP Mark Wijngaarde

Sofia, Bulgaria, 9-10 Nov 2006

I wish you all a fruitful symposium and I am now already convinced that this international symposium will be a great success and will bring the European Land Surveyors more together.

Thank you for your attention

Ing. Mark R. Wijngaarde
CLGE Vice President for European Relations

E-mail: mrwijngaarde@cs.com and wmark@xs4all.nl