

## EVERYTHING IS FOCUSED ON GEO

To be true.... the importance of Geodata was about 20 years ago so obvious , that since the beginning of the Information Technology revolution, the attention for the computerization was not focussed on the first place to the spatial aspects.

Nowadays we understand that in our society the space and spatial data for a lot of things we daily do of great importance is.



**The Council of European Geodetic Surveyors  
Comité de Liaison des Géomètres Européens**

### **CLGE HEADING EAST**

**at the Internationale Symposium  
„Modern Technologies, Education and  
Professional Practise in Geodesy and  
Related Fields“**

Sofia, Bulgaria, 9-10 November 2006

CLGE Heading East

Sofia, Bulgaria, 9-10 Nov 2006

**By Mark R. Wijngaarde**

What is CLGE and what is the purpose and objectives of this European organization?

The purpose and objectives of the CLGE, as the Platform for European Geodetic Surveyors is to represent and promote the interests of the geodetic surveying profession in the private and

public sectors in Europe, especially to the Institutions of the European Union.

- Creation of a permanent forum for European geodetic surveyors, who are committed to European co-operation, characterised by a spirit of partnership
- Promotion and exchange of technical, scientific, educational and organisational 'know-how' within the European states, and the provision of assistance in dealing with issues arising from different conditions in various CLGE member States
- Provision of assistance to member countries, to national associations and EU institutions on request
- Cultivation of relations between the professional groups representing European geodetic surveyors in CLGE
- To demonstrably support the European Institutions in all relevant undertakings and, in particular, to co-operate with and assist the European Commission in the mutual recognition of qualifications for academic and professional purposes.
- To contribute within the European jurisdiction on professional matters
- Stimulate and facilitate the enhancement of standards of academic and professional qualifications, improving service to customers and the quality of outputs within the geodetic surveying market throughout Europe.

The CLGE was established at the Fédération Internationale des Géomètres (F.I.G.) Congress in Wiesbaden in 1972 by the 9 member States of the EEC to consider the implementation of the Treaty of Rome in relation to the profession of geodetic surveying.

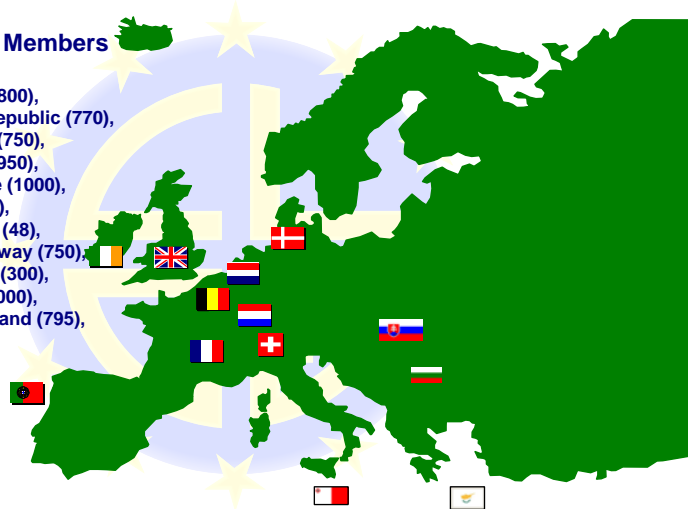


**The Council of European Geodetic Surveyors**  
**Comité de Liaison des Géomètres Européens**

**23 CLGE Principal Members**

Austria (670), Belgium (800),  
Bulgaria (200), Czech Republic (770),  
Cyprus (120), Denmark (750),  
Finland (700), France (1950),  
Germany (3500), Greece (1000),  
Ireland (340), Italy (3000),  
Luxembourg (35), Malta (48),  
Netherlands (1100), Norway (750),  
Poland (1500), Portugal (300),  
Slovakia (619), Spain (2000),  
Sweden (1300), Switzerland (795),  
United Kingdom (3000)

total 25 247



CLGE Heading East

Sofia, Bulgaria, 9-10 Nov 2006

Since then CLGE has represented geodetic surveyors in 23 European States, which includes 20 member states together with Norway, Switzerland and Bulgaria. CLGE has an official name in two European languages English and French, “The Council of European Geodetic Surveyors” and “Comité de Liaison des Géomètres Européens”.

The two languages are used because the business of the council is conducted in English, and the language of the European Courts of Justice is French. The accepted abbreviation in all languages is “CLGE”.



## Objectives

To represent the interests of the profession

- Participation in legislation processes at European level  
CEPLIS / Economic and Social Council  
ESF / European Commission and Social Dialogue
- Co-operation with and assistance to the EC for regulations on mutual recognition of qualifications  
Unit of DG Internal Market  
MEP

Besides these purposes and objectives of the CLGE the aim of this European professional organization is to enhance the development of the profession administratively, educationally and scientifically.



## Objectives

**Providing** a forum for professional issues

- Liaison between other Organisations  
FIG, GE, WPLA
- Assist recognition of associations as regulated professional bodies  
national governments
- Produce reports on practice of profession in Europe  
“Market Report” published in September 2003  
“European Professional Qualifications in Geodetic Surveying”, published in June 2006

In addition it aims to facilitate training, continuous professional development and mutual recognition together with the promotion of geodetic surveyors as a highly qualified profession. Being committed to this purpose, CLGE has the following main objectives:

- Presentation of the geodetic surveying profession to the European public and authorities.
- Active participation in pertinent legislative processes at European level.
- Participation in, and membership of, organizations and associations that embrace CLGE's aims and objectives.

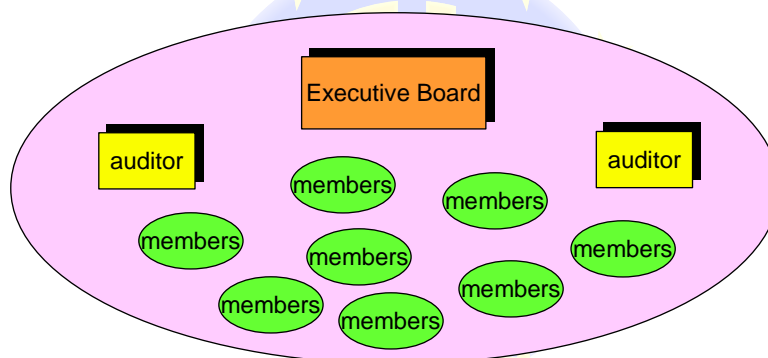
### Liaison with the European Commissions

CLGE has nominated a liaison Officer to open and maintain contact with the European Commission. Links have already been established with DG 12, 15 and 22.



**The Council of European Geodetic Surveyors**  
**Comité de Liaison des Géomètres Européens**

### Structure



### General Assembly

CLGE Heading East

Sofia, Bulgaria, 9-10 Nov 2006

### Structure of CLGE

CLGE is composed of the following bodies:  
The General Assembly of Members

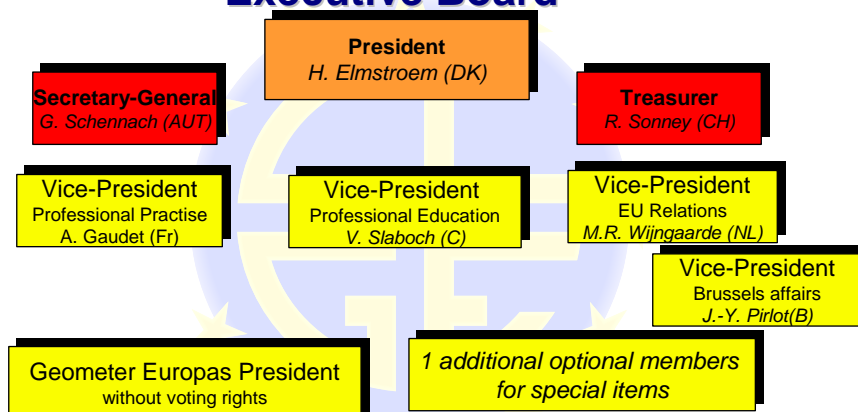
The General Assembly decides policy and delegates the management of CLGE to the Executive Board. The General Assembly sets the overall agenda for activities undertaken through the Executive Board for Working Parties to handle particular tasks. The General Assembly approves Statutes, Internal Rules, Budgets and Accounts.

The General Assembly is held twice a year in spring and autumn comprising 3 half day sessions on Friday and Saturday. The working language is English. Each CLGE Member State nominates a maximum of two delegates to attend the General Assembly (GA).



**The Council of European Geodetic Surveyors**  
**Comité de Liaison des Géomètres Européens**

### Executive Board



CLGE Heading East

Sofia, Bulgaria, 9-10 Nov 2006

- The Executive Board consists of:
  - President
  - The President is chairman of the General Assembly and the Executive Board



- **Professional Education**

- Academic Qualification
- Professional Qualification and Licensing
- Mutual Recognition
- Continuous Professional Development  
(Impact of the Bologna Model)

- Vice President for Professional Education
- The Vice President for Professional Education covers issues of academic qualifications, professional qualifications and licensing procedures, professional competence, mutual recognition and Continuous Professional Development



- **Professional Practice**

- Private Surveying Sector
- Public Surveying Sector
- PP Relationship - PPP
- Ethical challenges

- Vice President for Professional Practice
- The Vice President for Professional Practice covers issues of the private surveying sector, public surveying sector, Public Private Relationship, and Public-Private Partnership



**The Council of European Geodetic Surveyors**  
**Comité de Liaison des Géomètres Européens**

### **EU Relations**

- Participation in EU activities related to our Profession
- Supporting accession countries (Heading East)
- Advising on national Surveying Laws

CLGE Heading East

Sofia, Bulgaria, 9-10 Nov 2006

- Vice President for European Relations
- Vice President for Brussels Affairs
- The Vice President for European Relations focuses on participation in EC activities to the profession and promoting the profession in the EU together with supporting accession countries over the EU funding for participation and translations, advising on national surveying laws, and supporting the development of National Associations
- The Vice President for Brussels Affairs focuses on lobbying our profession at the EU parliament, representing the CLGE in the political Brussels Affairs and contacting and built up relationship with Member of Parliaments

As permanent members:

- Secretary-General



- The Secretary General is responsible for the administration of CLGE, the management of the secretariat, the maintenance of the document archive and the preparation of minutes of meetings
- Treasurer
- The Treasurer is responsible for all financial matters of CLGE

2 additional elected optional members without portfolio are responsible for special items of priority as non-permanent members (e.g. internal auditors)  
President of Geometer Europas ex officio without voting rights

A maximum of 2 members of the Executive Board may come from the same country

The Executive Board is in charge of, and controls, the day-to-day business of CLGE and is responsible for keeping up an internal and external information flow by means of electronic communication

The Executive Board reports regularly to the General Assembly and proposes new Working Parties, Task Forces and Grants to the General Assembly.

The Executive Board meets at least 2 but not more than 4 times a year, two of them in connection with the General Assembly.

Members of the Executive Board carry out their duties on a neutral basis. The President cannot serve as a delegate of a member country during his/her term of office



**The Council of European Geodetic Surveyors**  
**Comité de Liaison des Géomètres Européens**

---

**Conferences and Seminars**

DEC 2005, Two day Conference held in Brussels  
European Professional Qualifications in Surveying  
more than 200 participants

2007 , March 22, 2007 Lyon: 1 day seminar  
Working title " How to attract student to the Surveying profession"

Next meeting:  
General Assembly March 23-24 of 2007, Lyon France

CLGE Heading East

Sofia, Bulgaria, 9-10 Nov 2006

**Conferences and Seminars**

**Reports:**

- \*The Education and Practice of the Geodetic Surveyor  
in Western Europe  
by Dr. Arthur Allan
- \*The Establishment of the Profile and definition of the  
Geodetic Surveying Profession in Europe  
By John Stannard
- \*Enhancing professional Competence of Surveyors  
in Europe  
a joint CLGE/FIG report edited by Stig Enemark and Paddy  
Prendergast, November 2000
- \*Market Report about the Market of Surveying in Europe  
a joint CLGE/ GE report edited by Otmar Schuster,  
Emmanuel Ouranos, Martina Busch and Ernst Höflinger,  
July 2003
  
- \*European Professional Qualifications in Geodetic Surveying

Edited by Václav Slaboch and Jean-Yves Pirlot  
The CLGE International Conference in Brussels, December  
2005

To learn more about the CLGE, her history and goals, I may refer  
to the paper presented by Volkmar Teetzmann on the Intergeo  
October 2006 in Munich:

**ON THE ROAD TO AN EUROPEAN GEOMETER ?**,  
Which you will find in your seminar proceedings.



**The Council of European Geodetic Surveyors**  
**Comité de Liaison des Géomètres Européens**

### **CLGE heading East**

- One of the main aims of CLGE is promoting high levels of professional competence for all its members in the EU member states, implying high levels of training and the provision of high quality services.

CLGE Heading East

Sofia, Bulgaria, 9-10 Nov 2006

### **CLGE heading East**

Related to the interest of the National Geodetic Associations or National Liaisons of Geodetic Surveying Professionals of new EU member states in East Europe it will be obvious that there is a lot of work to do in joint efforts with the National Geodetic Associations or National Liaisons of Geodetic Surveying Professionals .

As an example some CLGE members and Observers in the East EU member states have asked for CLGE's assistance to help them

to upgrade their standards, sometimes against the will of their governments.



**The Council of European Geodetic Surveyors**  
**Comité de Liaison des Géomètres Européens**

- **The CLGE's position**  
in this “**Heading East Strategy**” is based upon the belief that the core of our profession is to provide good administration and secure property titles in land and real estate markets.

CLGE Heading East

Sofia, Bulgaria, 9-10 Nov 2006

. The tools we use and the services we provide are essential to guarantee land property and efficient land administration. This demand usually requires a two-fold training, in surveying techniques and law, which cannot be completed without a long period of study.



**The Council of European Geodetic Surveyors**  
**Comité de Liaison des Géomètres Européens**

This standard of

**bac+5 level**

justified by the skills required from the profession, was the reason that CLGE signed the Accord Multilateral, which has been drafted by the ex President Otmar Schuster Geometer Europas

CLGE Heading East

Sofia, Bulgaria, 9-10 Nov 2006

A recent survey to collect information about surveying training programs in Europe showed that two thirds of these trainings programs were at the bac+5 level (5 years after graduation from secondary school).

This standard of bac+5 level is justified by the skills required from the profession, i.e. both technical skills for measurements, and legal skills for counselling and the view that an exclusively technical training would enable cartographers to encroach upon our profession, and also that an exclusively legal training would open the same door to lawyers.

Our originality depends upon our dual training, and this feature is well appreciated by all the customers, either individuals or local authorities, etc., using geo-data..

This belief was the reason that CLGE signed the Accord Multilateral, which has been drafted by the ex President Otmar Schuster Geometer Europas.

The “Accord multilateral” is a commitment to the common intention to implement the European fundamental freedoms, to cling to the high quality of the profession but also to demonstrate the balancing act, which European professionals are forced to do if they are a national, regional authority on the one hand and a factual and political object of national and European trends/desires on the other hand.

Focussing on the European directive on professional qualifications, which has recently been adopted, it has to be underlined the fact that CLGE is in favour of this, since European surveyors embrace the concept of free circulation of professionals.

However, we have to take care that there is a risk of an insufficient level of qualifications being required from the European professional, and we therefore call upon all our colleagues in West-, but also in East Europe to work together in order to establish a common professional platform, which would allow us to present a unified position to the European institutions.



**CLGE** had adapted her working plan for 2005-2007 by creating recently an EU- Task Force together with the Geometer Europas to study the above mentioned important issue and to determine how to effectively represent its work out more efficiently this interests and the quality of the services offered

To support this, CLGE had adapted a working plan for 2005-2007 by creating recently an EU- Task Force together with the Geometer Europas to study this important issue and to determine how to effectively represent its interests and the quality of the services offered.



- **Main areas of the Working Plan**
  - Professional Education
  - Professional Practice
  - EU Relations

Summarized it has to be said that our world is evolving the last 50 years very quickly, and all the changes, in this digital époque, by the introduction of satellites, developments in space, global position systems, computer technology, lasers, sensors, nanotechnology, telecommunication, virtual reality, internet and last but not least the globalization that our profession has had to face have radically altered our working methods, and it is very likely that other drastic changes will soon take place.

Moreover public opinion and sensitivity to the various aspects of sustainable global development are growing. Since computing technologies put measurement techniques increasingly within the reach of a growing number of technicians, in order to survive, our profession has to adapt.



**The Council of European Geodetic Surveyors**  
**Comité de Liaison des Géomètres Européens**



CLGE Heading East

Sofia, Bulgaria, 9-10 Nov 2006

CLGE in close cooperation with the National CLGE member organizations should develop counselling activities in order to promote the best practices for land management.

The importance of legal training should therefore, grow at the expense of technical training.

This should allow the European surveyors to be more active in land management and environmental landscape markets among others. CLGE, as the platform for European surveyors, should demonstrate that there can not be sustainable global development without

efficient land management, and that the surveyors are the only professionals able to master both the technical and the legal tools required for this type of development



**The Council of European Geodetic Surveyors**  
**Comité de Liaison des Géomètres Européens**

---

- For sure the **Bulgarian Union of Surveyors and Land Managers** in joint efforts with “The Council of European Geodetic Surveyors” (**CLGE**) will be open to cooperate progress jointly in this professional educative process .

CLGE Heading East

Sofia, Bulgaria, 9-10 Nov 2006



**The Council of European Geodetic Surveyors**  
**Comité de Liaison des Géomètres Européens**

---

**Thank you for your attention**

CLGE Heading East

Sofia, Bulgaria, 9-10 Nov 2006



Ing. Mark R. Wijngaarde  
CLGE Vice President for European Relations

E-mail: [mrwijngaarde@cs.com](mailto:mrwijngaarde@cs.com) and [wmark@xs4all.nl](mailto:wmark@xs4all.nl)