



*Research Institute of Geodesy, Topography and Cartography,
CZ 250 66 Zdiby 98, fax: +4202-84890056, e-mail: vugtk@vugtk.cz*

Proposal for the new CLGE Website

Milan Talich

Milan.Talich@vugtk.cz

Actual state of CLGE website:

- the website is established as a 2-layer site:
 - Layer 1 is the official CLGE site
 - Layer 2 is the official presentation of each member country

Layer 1 – official CLGE web-site:

- contain supplied presentations and all the **official information** (CLGE files)
- full-text search machine
- The basic divisions are:
 - **HOME** – preliminary page containing also news
 - **INTRODUCTION** – basic information on CLGE
 - **MEMBERS** – list of members with references to their web-site (to Layer 2)
 - **DOCUMENTS** – documents, publications,...
 - **EVENTS** – information on symposia and conferences organised by CLGE
 - **FOR MEMBERS ONLY** – a part with non-public information assigned only for CLGE members and accessible only through an appropriate password (*clge / clge*)
 - **LINKS** – references to interesting passages related to CLGE activities
 - **CONTACT** - contacts
 - **MAP OF SERVER**

Layer 1 – official CLGE web-site:

- is hosted on the server VÚGTK under address www.clge.eu
- is updated and developed by the VÚGTK webmaster using information from general secretary (GS)
- Documents for display are sent from the GS in any electronic form to the VÚGTK (*.rtf, *.doc, *.xls,...). Webmaster convert these documents into WWW form and display on the web.
- The back-up of the website is running daily in order to protect the data to any losses or prevention to illegal activities



The Council of European Geodetic Surveyors
Comité de Liaison des Géomètres Européens

 search

Webmaster

<http://www.clge.org>

News:

>> Executive Board meeting in Vilnius/Belgium, 22-23 June 2007.



>> President letter, 19 December 2007

>> President letter, 14 March 2006

>> President letter, 10 October 2005

[Archives of Events >>](#)

Last modified: 21 June 2007

Welcome to CLGE home page ...



CLGE Members



The Council of European Geodetic Surveyors
Comité de Liaison des Géomètres Européens

For members \ Documents, Presentations, Photo-gallery, Instruction

webmaster

- Documents: Year 04, 03, 02, 01 | Other
- Photo-gallery
- Instruction for update of national CLGE page

Year 2007

» EXECUTIVE BOARD OF CLGE, Vilnius/Lithuania, 22-23 June 2007

| Document | Download |
|-------------|----------|
| ▶ Programme | |
| ▶ Agenda | |

» General Assembly Lyon/France, 23-24 March 2007

| Document | Download |
|---|----------|
| ▶ Delegates | |
| ▶ Report EU | |
| ▶ Participation list | |
| ▶ Minutes | |
| ▶ CLGE WORK PLAN | |
| ▶ FIG Definition of the Functions of the Surveyor | |
| ▶ FIG Definition der Aufgaben und Tätigkeiten der Vermessungsingenieure | |
| ▶ Définition FIG des fonctions du géometre | |
| ▶ President Report | |
| ▶ Agenda | |
| ▶ Annual accounts 2006 – Report to the General Assembly | |
| ▶ Definition of a Geodetic Surveyor | |

Layer 2 – official presentation of each member country:

- is **updated by the member organisations** and supervised by the GS
- is demanded to be **uniform** as to features of pages and structure of data, and hosting on the same server
- using of an **editing system** enabling updating of website of each member country by means of forms. Uniform WWW pages will be then automatically generated.
- every member country has its own **password** for update of its data



Members / Switzerland - principal Member

Constituent Organisations:

geosuisse Schweizerischer Verband für Geomatik und Landmanagement / geosuisse Société suisse de géomatique et de gestion du territoire

Ingenieur-Geometer Schweiz IGS / Ingénieurs-géomètres Suisse IGS
SIA-Fachverein der Kultur-, Geomatik- und Umweltingenieure SIA-FKGU / Société spécialisée SIA des ingénieurs du génie rural, des ingénieurs-géomètres et des ingénieurs de l'environnement SIA-SRGE
Schweizerische Gesellschaft für Photogrammetrie, Bildanalyse und Fernerkundung SGPBF / Société suisse de photogrammétrie, d'analyse d'image et de télédétection SSPIT
ETH Zürich BAUG Studienrichtung Geomatik und Planung / EPF Zurich BAUG filiere géomatique
EPF Lausanne ENAC - INTER / groupe géomatique / EPF Lausanne ENAC - INTER / groupe géomatique
Eidg. Prüfungskommission für Ingenieur-Geometer / Commission fédérale d'examen des ingénieurs géomètres
swisstopo Bundesamt für Landestopografie / swisstopo Office fédéral de topographie
Konferenz der kantonalen Vermessungsämter KKVA / Conférence des services cantonaux du cadastre CSCC
Abteilung Strukturverbesserung des Bundesamtes für Landwirtschaft ASV BLW / Office fédéral de l'agriculture, division améliorations structurelles OFAG/DAS
Schweizerische Vereinigung für Strukturverbesserungen und Agrarkredite VSVAK / Schweizerische Vereinigung für Strukturverbesserungen und Agrarkredite VSVAK



National Liaison Group:

geosuisse Schweizerischer Verband für Geomatik und Landmanagement / Société suisse de géomatique et de gestion du territoire / Societa svizzera di geomatica e di gestione territoriale / Societad svizra da geomatica e da gestiun territoriala

CLGE Delegates:

▶ Jürg KAUFMANN

Address: Im Hauffeld, CH-8455 Rüdlingen
E-mail: jkcons@swissonline.ch
WWW: geosuisse

▶ René Sonney

Address: swisstopo, Seftingenstrasse 264, CH-3084 Wabern
E-mail: rene.sonney@swisstopo.ch
WWW: geosuisse

National WWW CLGE address: geosuisse



The *Council* of European Geodetic Surveyors
Comité de Liaison des Géomètres Européens

For members \ [Instruction for update of national CLGE page](#)

[webmaster](#)

For update your national www page with national information (layer two of the WWW CLGE - here you can enter or change all your national data) please use link to your formular for update on this page:

- AUSTRIA
- BELGIUM
- BULGARIA
- CYPRUS
- CZECH REPUBLIC
- DENMARK
- FINLAND
- FRANCE
- GERMANY
- GREECE
- IRELAND
- ITALY
- LUXEMBOURG
- MALTA
- THE NETHERLAND
- NORWAY
- POLAND
- PORTUGAL
- ROMANIA
- SLOVAKIA
- SPAIN
- SWEDEN
- SWITZERLAND
- UNITED KINGDOM

Instruction:

1. Login and password you receive from webmaster Milan Talich: webmaster_clge@vugtk.cz or from secretary general Gerda Schennach: gerda.schennach@bev.gv.at
2. An example for completion of [Update form - starting page](#)
3. An example for completion of [Check and save - second page](#)

Last modified: 2. May 2007



Members / Update form for CLGE members - starting page

Please fill this form ¹⁾

State (max. 50 signs)

Member Principal
 Observer
 Honorary

Constituent
Organisations ^{2), 3)}

Schweizerischer Verband für Geomatik und Landmanagement /
Société suisse de géomatique et de gestion du territoire /
Societa svizzera di geomatica e di gestione territoriale /
Societad svizra da geomatica e da gestiun territoriala

Ingenieur Geometer Schweiz IGS (Gruppe der Freierwerbenden des SVVK)

Konferenz der Kantonalen Vermessungsämter (KKVA)

(max. 2550 signs)

National Liaison
Group ^{2), 3)}

Schweizerischer Verband für Geomatik und Landmanagement /
Société suisse de géomatique et de gestion du territoire /
Societa svizzera di geomatica e di gestione territoriale /
Societad svizra da geomatica e da gestiun territoriala

(max. 2550 signs)

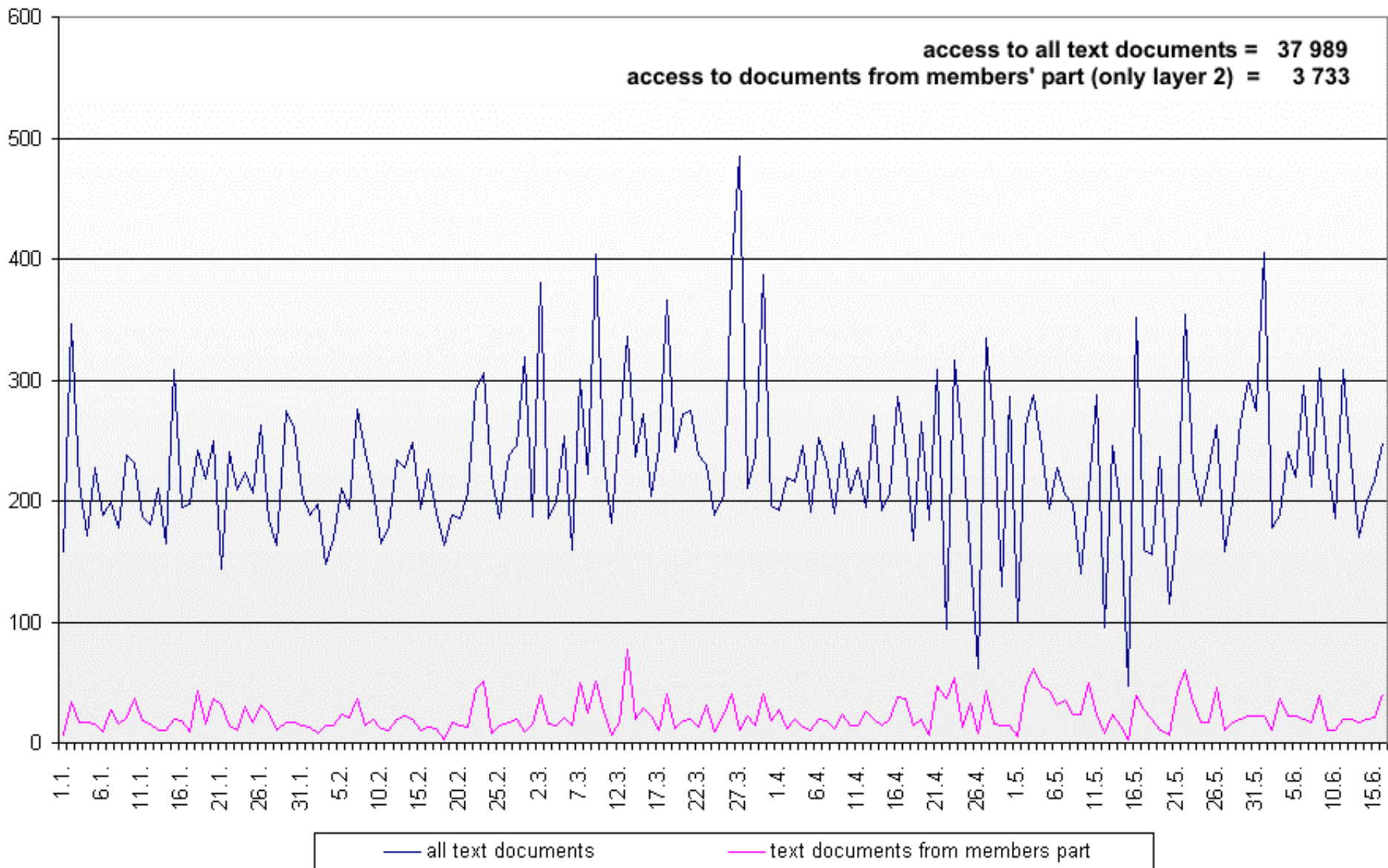
Technical specification of the server:

- OS: Linux - Red Hat
- WWW server: Apache, PHP, MySQL (ASP, MS SQL is not possible)
- Connectivity: 33 Mbit/s to the CESNET2, (<http://www.cesnet.cz/english/>), then 1,2 Gbit/s to the European net Géant (<http://www.dante.net/geant/>)

Statistics of the CLGE website:

- **37 989 text documents** required from website during year 2007,
- every day on an average 228 text documents required from website,
- **Search robots are excluded** from the statistics
- **3 733 text documents** required from **layer 2** during year 2007,

Statistics of the CLGE website



New joint website of CLGE/GE

- Priorities are:
 - Information contents
 - Services
 - Actual contents (up to date)
 - ...
 - Design

Requirements to the new joint website of CLGE/GE

- websites CLGE and GE to joint in one, with the possibility switch between pages of CLGE and GE
- the datastructure of both websites will be the same
- differences will be only in color, design and some details
- on the title page should be information for visitors (what is CLGE and GE, goals,...)
- finding as simplest as possible and also the cheapest solution

Services of the new joint website:

- Actual national data will complete national delegates of the members state using webformular
- Fulltext search
- RSS channels for News and Events for members
- Discussion forum
- Automatic distribution of documents using webformular for general secretary? (depend on GS)



search



you are here: Home -



News

President letter

May 28, 2007

President letter

April 18, 2007

President letter

January 2, 2007

President letter to
Santa Claus

December 14, 2006

[More news...](#)

Upcoming Events

Executive Board of
CLGE

Vilnius/Lithuania,

June 22-23, 2007

Executive Board
meeting

May 28, 2007

CLGE Seminar 2007
"Geodetic Surveying, a
Challenging Profession:
Promoting Surveying
Studies in Europe"
Lyon/France,

March 22, 2007

[Upcoming events...](#)

What is CLGE

CLGE has a name in two of the many European languages English and French, namely, "The European Council of Geodetic Surveyors" and "Comité de Liaison des Géomètres Européens".

This has arisen because the business of the council is conducted in English, and the language of the European Courts of Justice is French. The accepted abbreviation in all languages is "CLGE".

CLGE was established at the Fédération Internationale des Géomètres (F.I.G.) Congress in WIESBADEN in 1972 by the then 9 member States of the EEC to consider the implementation of the Treaty of Rome in relation to the profession of geodetic surveying.

CLGE represents (2004 data) Geodetic Surveyors in 27 States, which includes all 25 Member States of the European Union, and Norway and Switzerland.

The objectives of the CLGE

To represent and to promote the interests of the geodetic surveying profession in the private and public sector in Europe, especially

Creation of a permanent forum for European geodetic surveyors, who are committed to European co-operation, characterised by a spirit of partnership.

Promotion and exchange of technical, scientific, educational and organisational know-how within the European states and provision of assistance in dealing with issues arising from different conditions in various CLGE member States.

Provision of assistance to member countries, to national associations and EU institutions on request.

Cultivation of relations between the professional groups represented as European geodetic surveyors in CLGE.

To demonstrably support the European Institutions in all its relevant undertakings and, in particular, to co-operate with and assist the European Commission in the mutual recognition of qualifications for academic and professional purposes and to contribute within the European jurisdiction on professional matters.

Stimulate and facilitate the enhancement of standards of academic and professional qualifications, improved service to customers and quality of outputs within the geodetic surveying market throughout Europe.

Presentation of the geodetic surveying profession to the European public and authorities.

Active participation in pertinent legislation processes at European level.

Participation in and membership of organisations and associations within the scope of the CLGE's purpose.

Liaison with the European Commissions

CLGE has put one of the Vice-Presidents in charge of the EU Relations.

General Assembly

The General Assembly is organised at least once a year.

The working language is English.

Each State nominates a maximum of two delegates to attend the General Assembly.

The General Assembly decides policy.

The General Assembly delegates the operation of CLGE to the Executive Board.

Executive Board

The Executive Board is in charge of, and controls the day-to-day business of CLGE.

Much of the work is conducted electronically using e-mail, faxes, etc.

A maximum of 2 members of the Executive Board may come from the some country.



For Members

| | |
|----------|--------------------------|
| User | <input type="text"/> |
| Password | <input type="password"/> |

[Feedback to webmaster](#)


First
sponsor

Sponsor



Geometer Europas

search

you are here: Home -

News

[Eurogeographics, CLGE and GE meet in Brussels](#)
February 7, 2007

[Geometer Europas G.A. meets in Brussels](#)
December 22, 2006

[The Lithuanian Association of Surveyors signs the Multilateral Accord in Munich](#)
October 26, 2006

[More news...](#)

Upcoming Events

[Executive Board meeting](#)
May 28, 2007

[CLGE Seminar 2007 "Geodetic Surveying, a Challenging Profession: Promoting Surveying Studies in Europe" Lyon/France,](#)
March 22, 2007

[General Assembly Lyon/France](#)
March 23-24, 2007

[Upcoming events...](#)

Activities of members in individual states

Historical development

In Continental Europe these professions can be traced back to the institution of a comprehensive tax cadaster around the end of the 18th century. They played a key role in the transition to the property cadaster and the establishment of the property register system, the mapping system and the multi-purpose cadaster, land management and the setting up of support services for the building industry, and underpin all activities related to land and real estate property utilisation.

Definition of the Geometer in Europe

A freelance profession (liberal profession)

The term "Geometer" is used hereafter to describe professional activities in the field of surveying within Europe which

- * require a high level of qualification
- * are performed by personally liable and accountable individuals
- * are carried out in the private sector
- * and under government authority.

Geometers are assigned government functions

- France:** Géomètre Expert Foncier
- Austria:** Ingenieurkonsulent für Vermessungswesen
- Switzerland:** Patentierter Ingenieur-Geometer
- Germany:** Öffentlich bestellter Vermessungsingenieur
- Belgium:** Géomètre juré
- Denmark:** Praktiserende Landinspektør

The field of activities is associated in general with the documentation of land and real estate property; the real estate cadaster. Owing to the constitutional guarantee of property rights such matters are subject to state control. Professionals in the field are therefore assigned government agency functions in the relevant legislative fields.

Professional Legislation and code of conduct

These professions are firmly anchored in the legal systems of each respective country: Legislation relating to the profession provides the foundation. Material laws refer to the laws governing professional standards. Applicability laws specify the extent of professional competency. A professional code of conduct denies the rules of competition and procedure to which members of the profession are subject.

Private-sector professionals provide public services

Formal academic qualifications

The functions and responsibilities of the Geometer require a high level of qualification.

- * university degree
- * one or two years of further training with final examination for the purpose of acquiring specialist knowledge in the field of real estate property and administrative law and
- * a suitable period of practical experience.

These two elements - academic studies in geodesy and indepth knowledge of real estate property and administrative law enable the professional surveyor to perform government/public duties in a climate of private enterprise.

Basic requirements

In general, qualification requirements are comprised of two essential components:

- * geodesy: the science surveying and graphic representation of the earth's surface
- * legislation governing land with a focus on land, building and administrative law

Both these fields of study are developing in a very dynamic way:

The transition from cadasters to geographic information systems, from point determination to satellite positioning and from photogrammetric surveying to the matrix image enhance the technical possibilities of the professional field significantly. On the other hand, political and economic processes result in continuous changes in the nature of land and property management.



For Members

User
Password

[Feedback to webmaster](#)



Some remarks and questions to the conclusion:

- every member country should update its layer 2 with help of the updating form, no web skills are necessary (not everybody do it)
- should be the www.ge.eu (or www.geometer-europas.eu) domain registered to the server VÚGTK?
- will be no problem with completion of missing information (documents) in GE site?
- The price of the new joint website should be discussed



Research Institute of Geodesy, Topography and Cartography,
CZ 250 66 Zdiby 98, fax: +4202-84890056, e-mail: vugtk@vugtk.cz

Thanks for your attention

Milan.Talich@vugtk.cz