



TERIA

The RTK Network in France



Plan :

- 1) **Presentation of EXAGONE and TERIA**
- 2) **TERIA inside Europe**
- 3) **ETRS 89 in France**
- 4) **TERIA in France and the TERIA customer**



OGE
The french survey
Order

**550 surveyor and
Stockholder**
(member of OGE)

Stockholder
(France SGNS)

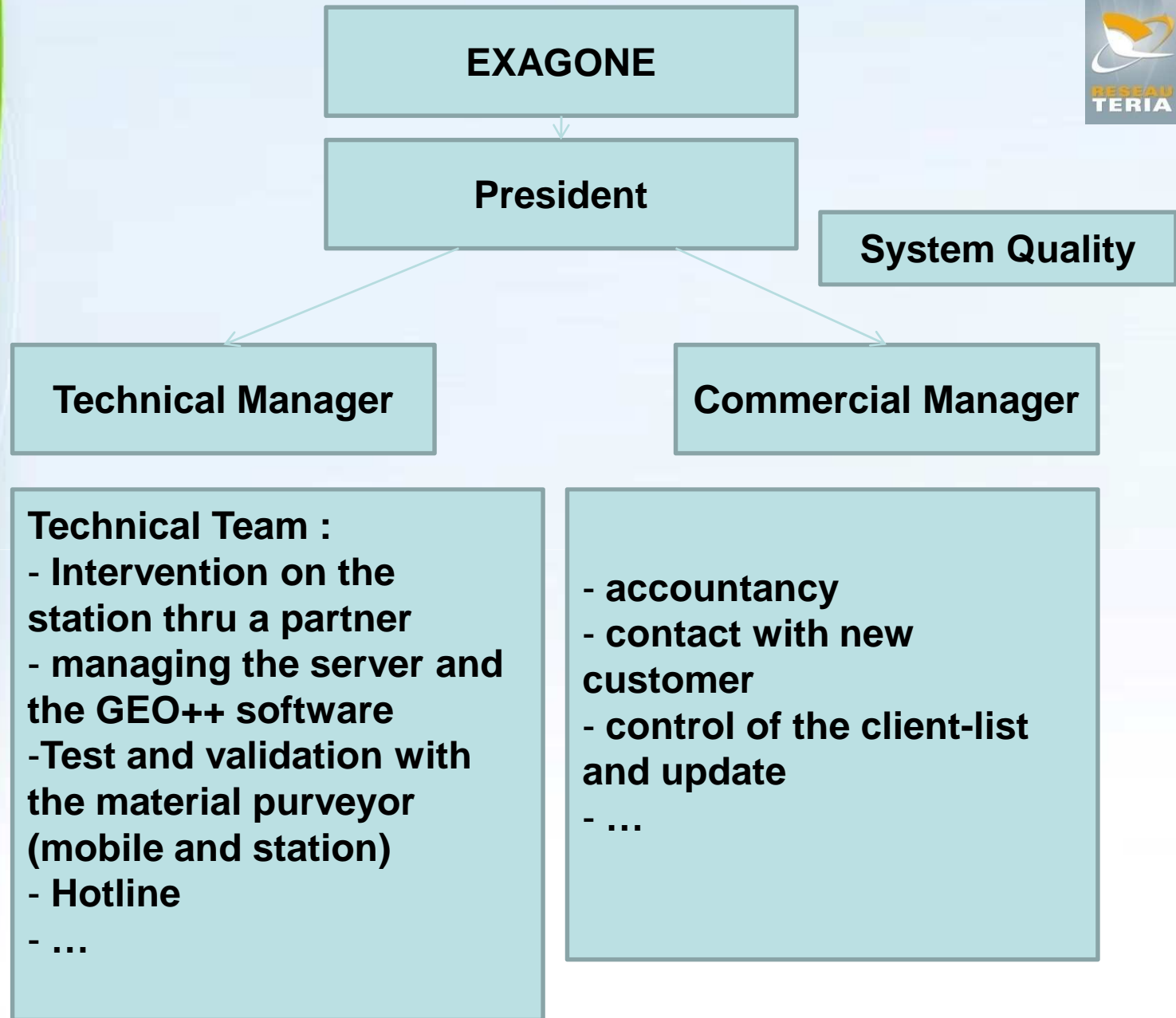

(SAS Private Company)

Society Name
founded in 2005

TERIA
(RTK Network)

Product Name, first
station in 2007





TERIA Network at the Origins

- 100 GPS stations (ICGRS from Thales, ASHTECH)
- The GEO++ software GNSMART
- All the system is managed by an external society MARTEC
- A bilateral protocol between OGE and IGN which mentioned that the Post-processing data are available free and that IGN calculate the coordinates of the stations in RGF93

TERIA Today

- **130 GPS/GLONASS** stations (NETG3 TOPCON, PF 500 ASHTECH, 1200GNSS LEICA)
- The GEO++ software GNSMART
- All the system is managed in **intern (since 16 month)**
- A bilateral protocol between OGE and IGN which mentioned that the Post-processing data are available free and that IGN calculate the coordinates of the stations in RGF93

About the TERIA Network

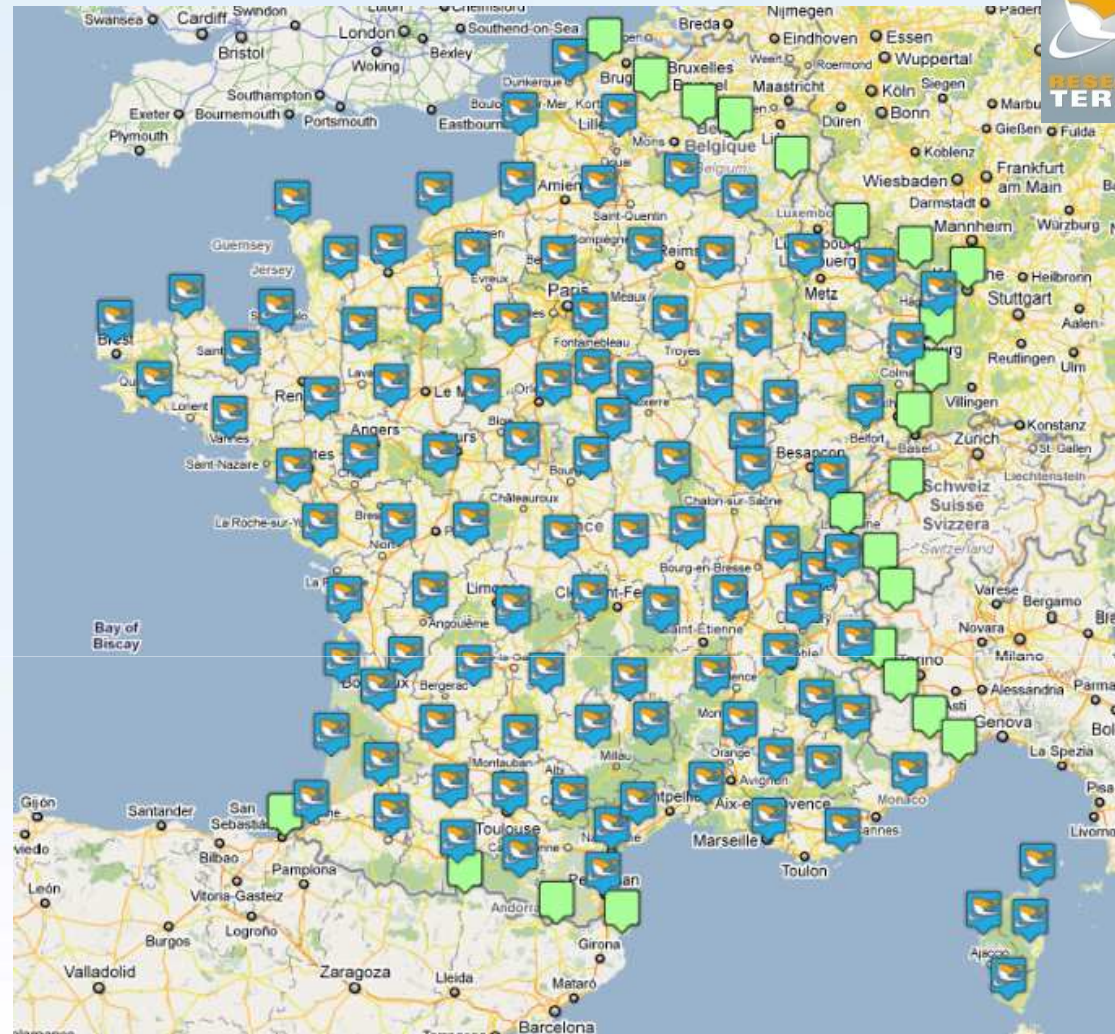


Actualités

Newsletter

Le Réseau

A new website since 2011



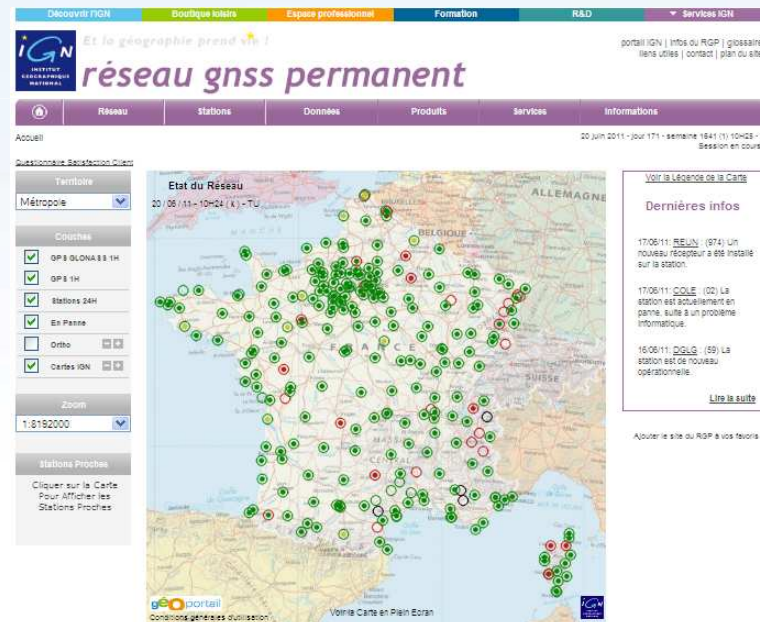
130 Stations integrated in the network

TERIA in an European integration



ETRS89 in France

- The name of the french model of ETRS89 in France is : **RGF 93**
- For the moment calculated in IGS05, but at the end of june in IGS08
- The Rinex Data are free available for the station in **RGF**



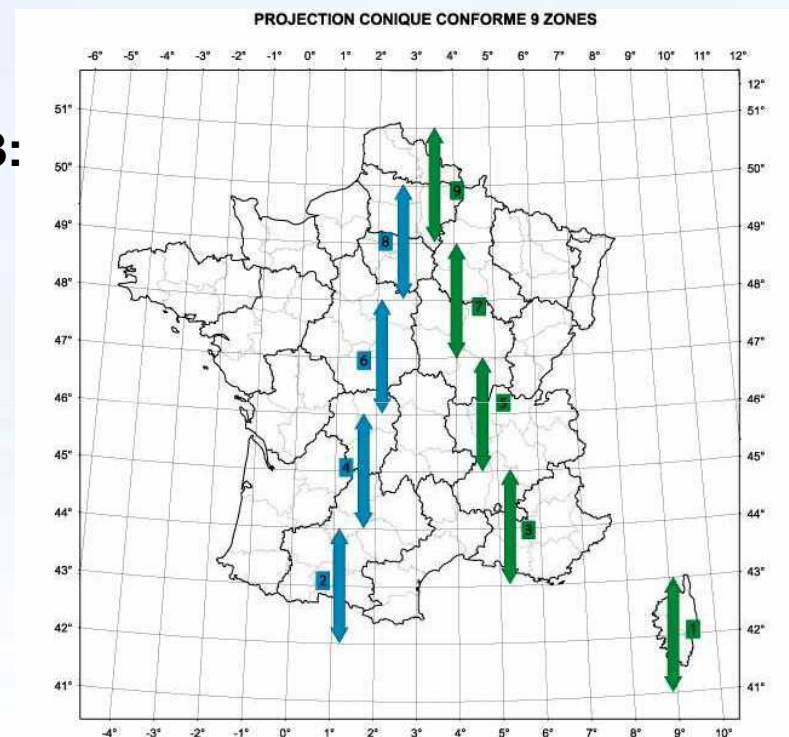
The projection in France

2 projections system in RGF 93:

- 9 Area Conical Conform

**- 1 projection for all France :
Lambert 93**

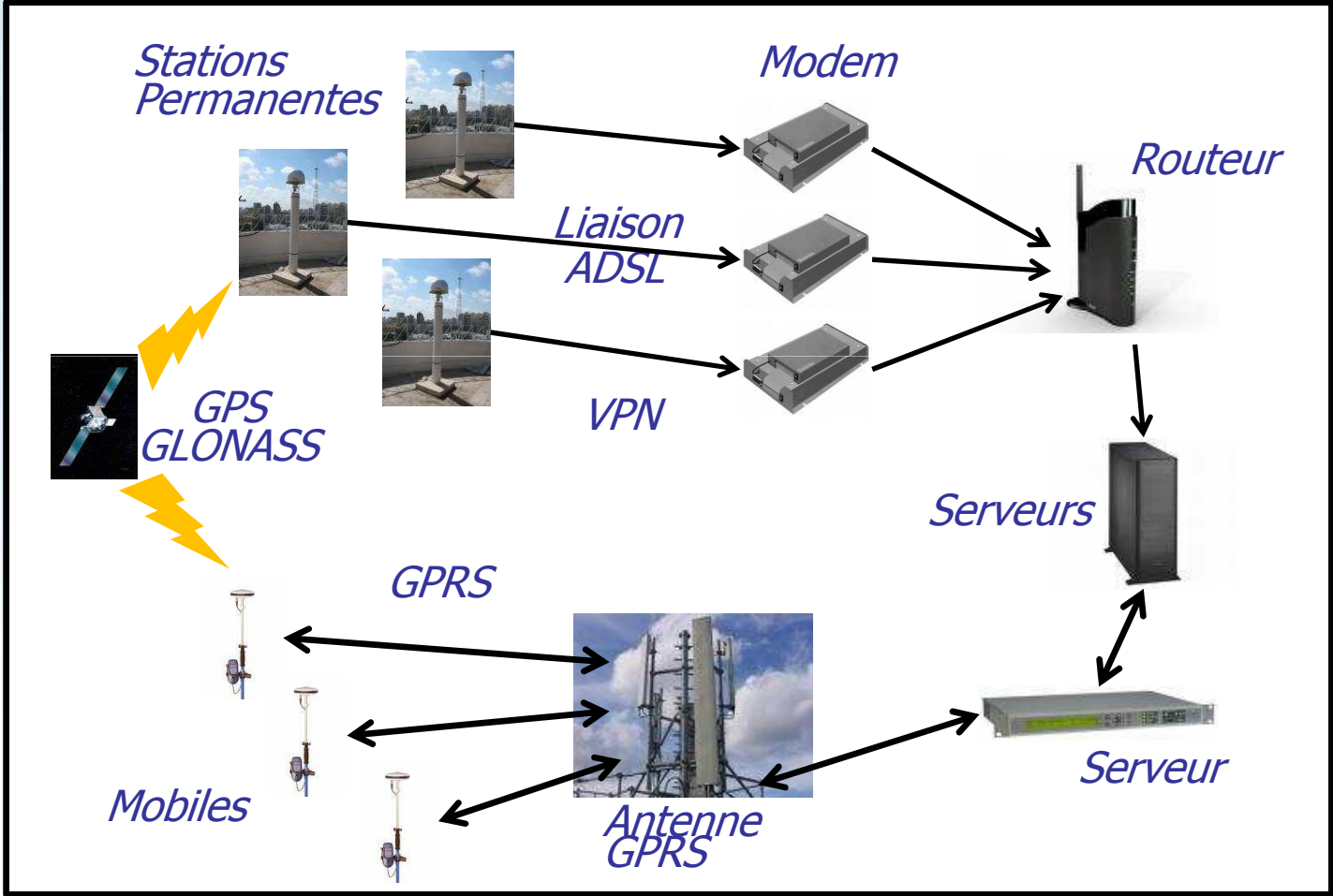
**- For the altimetry :
A grid (RAF 09 or RAC
09) transform the
elevation in altitude**





TERIA RTK Network

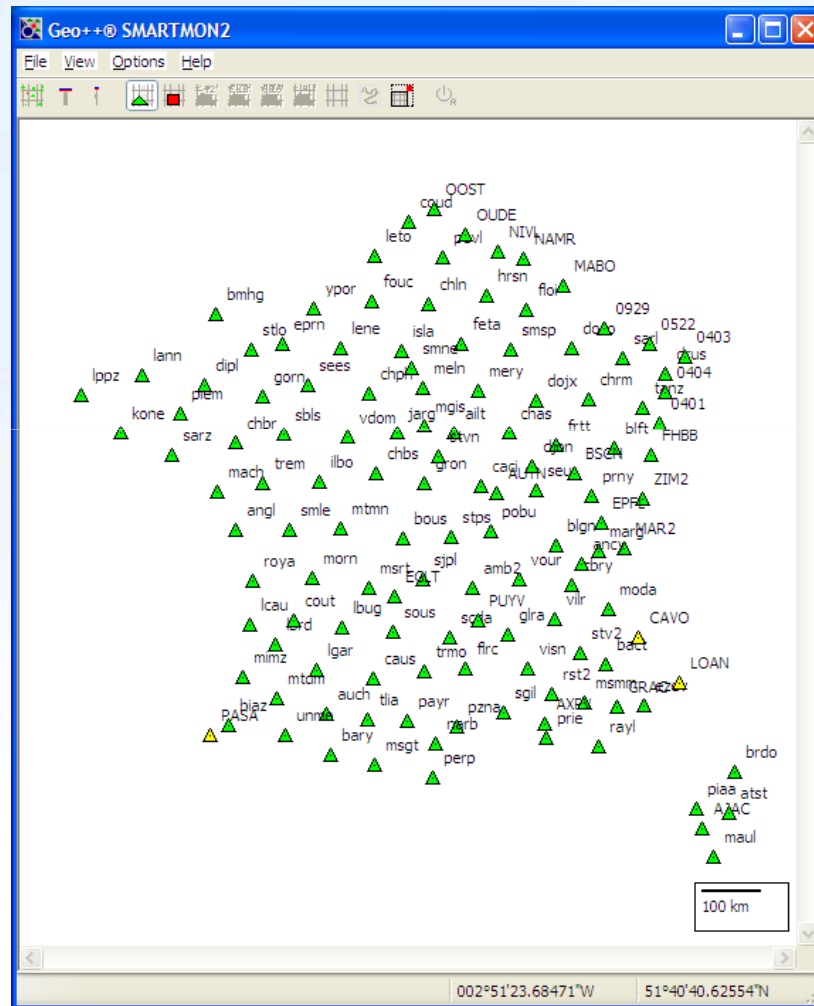
TERIA : only with NTRIP server



ADSL and satellite communication for the site



Control map of the station with the GEO++ software



The first network with a global coverage in RTK in France



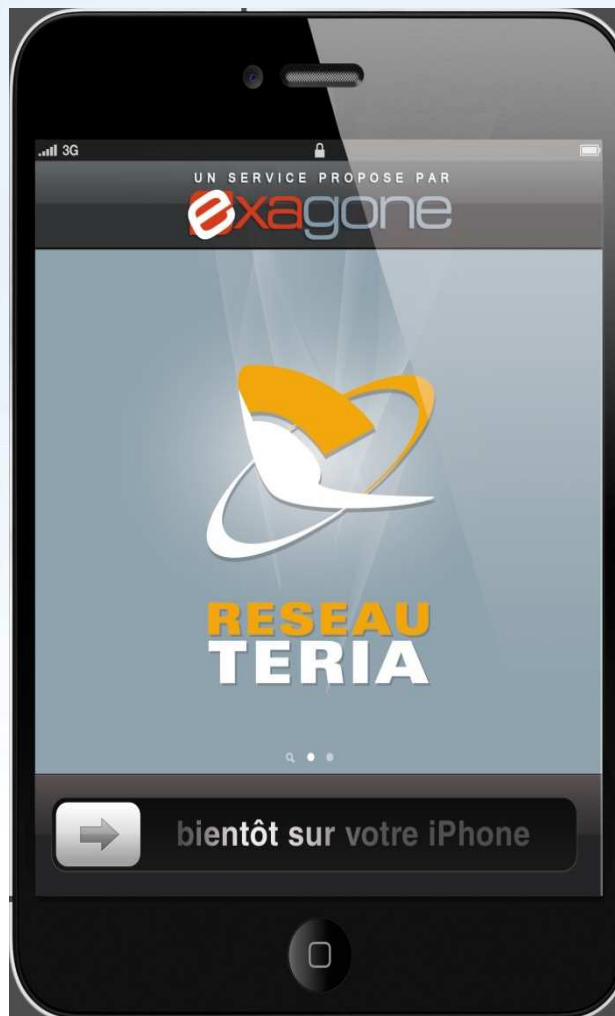
TERIA services

The correction type :

- FKP – RTCM 2.3 (GPS only)
- VRS or PRS – RTCM 2.3 or RTCM 3.0 or CMR (GPS and GLONASS)
- MAC – RTCM 3.1 (GPS and GLONASS)
- DGPS – RTCM 2.1 or RTCM 3.0 (GPS and GLONASS)
- Use of GNWeb for Virtual Rinex and post-processing thru the web site.
- SIM cards, ...



An application for our customer



Who use TERIA ?



Public works / guiding
public works vehicles



Accuracy Farming



Urban community



Networks / Underground networks
maintenance – GIS

Who use TERIA ?



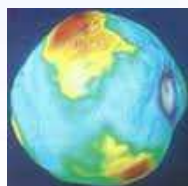
Road, marine and railways infrastructures



Fleet management – emergency response



Environnement



Research & geodesy

Topography – bathymetry – boundary marking .../ ...

all these domains need precise positioning



**For example : AIRBUS
trajectography**

By using our system of Virtual Rinex

**Goal : calculate a precise trajectory of a plane in
post-processing**

**The data which are needed : Rinex 2.11 with 5 Hz
data and a continuously service ...**

Question ?



 xagone