

# We are looking forward to...

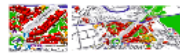


## 2nd FIG Young Surveyors European Meeting

European Young Surveyors  
together for tomorrow's challenges

### Venue

TU Berlin, Cassini-Str. 10, 10623 Berlin  
49.0514835, 13.3875000, 13.3875000, 49.0514835



### Organising Team



### Participants

around 150 participants

Albania, Austria, Croatia, Denmark, Estonia, Finland, Germany, Greece, Latvia, Poland, Romania, Serbia, Slovakia, Spain, The Netherlands, Turkey, UK (Indonesia, Philippines, USA, Israel, Nepal, Morocco, India, China...)

### Sponsors & Supporters



### General Overview

like comment share

#### 7th October 2014

09:30 - 18:00 2nd FIG Young Surveyors European Meeting  
18:00 - 21:00 3rd CLGE Students' Meeting

#### 8th October 2014

09:00 - 16:00 INTERGED  
16:00 - 18:00 CLGE Students' Contest



### Program in detail

like comment share

DATE	TIME	ACTIVITY
7th October	09:30 - 18:00	2nd FIG Young Surveyors European Meeting
7th October	18:00 - 21:00	3rd CLGE Students' Meeting
8th October	09:00 - 16:00	INTERGED
8th October	16:00 - 18:00	CLGE Students' Contest

### Homepage

like comment share

[http://www.fig.net/ys/YSEM\\_MEETING/2nd/index.htm](http://www.fig.net/ys/YSEM_MEETING/2nd/index.htm)

[Home] [Invitation] [Program] [Registration] [Venue] [Sponsors & Supporters] [Organisers]



### VENUE

The 2nd FIG Young Surveyors European meeting will be held in Berlin, Germany, at the Berlin Institute of Technology.

#### Directions to TU Berlin

The main event will be held at the TU Berlin, located in district of Berlin Charlottenburg. Below you will find several ways to get there.

The maps shown below will give you an overview where to find the location, which is room H1028, main building H, first floor. The address is:

TU Berlin, Straße des 17. Juni 135, D - 10623 Berlin.



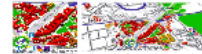
# We are looking forward to...



**2nd FIG Young Surveyors European Meeting**  
European Young Surveyors  
together for tomorrow's challenges

## Venue

TU Berlin, Strasse des 17. Juni 135, D - 10623 Berlin  
Please see the building from Strasse des 17. Juni, Coordinates are 52°30' 44.8714, 13° 19' 37.4712



## Organising Team



## Participants

around 150 participants

Albania, Austria, Croatia, Denmark, Estonia, Finland, Germany, Greece, Latvia, Poland, Romania, Serbia, Slovenia, Spain, The Netherlands, Turkey, UK (Indonesia, Philippines, USA, Israel, Nepal, Morocco, India, China...)

## Sponsors & Supporters



## General Overview

like comment share

### 7th October 2014

09:30 - 18:00 2nd FIG Young Surveyors European Meeting  
18:00 - 21:00 3rd CLGE Students' Meeting

### 8th October 2014

09:00 - 16:00 INTERGEO  
16:00 - 18:00 CLGE Students' Contest



## Program in detail

like comment share

Time	Activity	Location
09:30 - 18:00	2nd FIG Young Surveyors European Meeting	Room 100 (TU Berlin)
18:00 - 21:00	3rd CLGE Students' Meeting	Room 100 (TU Berlin)
09:00 - 16:00	INTERGEO	Room 100 (TU Berlin)
16:00 - 18:00	CLGE Students' Contest	Room 100 (TU Berlin)

## Homepage

like comment share

[http://www.fig.net/ys/YSEM\\_MEETING/2nd/index.htm](http://www.fig.net/ys/YSEM_MEETING/2nd/index.htm)

[Home] [Invitation] [Program] [Registration] [Venue] [Sponsors & Supporters] [Organisers]





# We are looking forward to...



## 2nd FIG Young Surveyors European Meeting

European Young Surveyors together for tomorrow's challenges

### Venue



TU Berlin, Strasse des 17. Juni 135, D - 10623 Berlin  
Enter the building form 'Strasse des 17. Juni', Coordinates are 52° 30' 44.8" N, 13° 19' 37.4" E



### Organising Team



### General Overview

like comment share

#### 7th October 2014

09:30 - 18:00 2nd FIG Young Surveyors European Meeting

18:00 - 21:00 3rd CLGE Students' Meeting

#### 8th October 2014

09:00 - 10:00 INTERSEC



# General Overview

like comment share

## 7th October 2014

09:30 - 18:00 2nd FIG Young Surveyors European Meeting

18:00 - 21:00 3rd CLGE Students' Meeting

## 8th October 2014

09:00 - 16:00 INTERGEO

16:00 - 18:00 CLGE Students' Contest



# Program in detail

like comment share

### DETAILED PROGRAM, 7 OCTOBER 2014

08:30 - 09:30 Registration

#### Opening Ceremony

The 2nd FIG Young Surveyors European Meeting will be kicked off by short 5 minutes welcome remarks by the representatives of each organisation. Each organisation put a lot of effort, work and time in making this meeting happen. Enjoy the welcome remarks and take the opportunity to meet and talk to the delegates.

KonGeoS  
DfW - Deutscher Verein fuer Vermessungswesen &  
BDW - Bund der öffentlich bestellten Vermessungsingenieure  
CLGE - Council of European Geodesic Surveyors  
FIG - International Federation of Surveyors  
FIG Foundation

Susanne Lurz Germany  
Clemens Kiepke Europe  
Rudolf Steiger Germany  
John Hand U.S.A

#### Pimpin our Future - Hand on, Shaping the Future

Chair: Christelle van den Berg & Dave Bruyning, The Netherlands

Pimpin our future! The participants will be separated in 4 groups. Each group working on one specific question each related to the previous Keynotes.

- 1) National Associations - We want you!
- 2) FIG Young Surveyors Network on the national level
- 3) Working together - Embracing the Networks
- 4) FIG YSEM - Navigating the future of Young Surveyors in Europe

Participants will be separated in groups working together on specific questions.  
10 min presentation by each group

#### 12:30 - 13:30 Lunch Break

Presentations of the Pimpin our Future Workshop

#### 18:00 - 21:00 3rd CLGE Students' Meeting

Thanks to our sponsors and supporters CLGE, DfW and BDW! we are invited to enjoy the CLGE Students' Meeting at the Rooftop of the TU Berlin. Drinks and snacks are provided and you can now take the chance to get to know your European colleagues better and in a more casual atmosphere. The party will close at 21:00 o'clock and its then up to you what you make out of the night in Berlin.

#### Sponsors and Supporters of the 3rd CLGE Students' Meeting



### DETAILED PROGRAM, 8 OCTOBER 2014

09:00 - 16:00 INTERGEO



8th October 2014

09:00 - 16:00 INTERGEO

16:00 - 18:00 CLGE Students' Contest



# Program in detail

like comment share

## DETAILED PROGRAM, 7 OCTOBER 2014

### 08:30 - 09:30 Registration

#### Opening Ceremony

The 2nd FIG Young Surveyors European Meeting will be kicked off by short 5 minutes welcome remarks by the representatives of each organisation. Each organisation put a lot of effort, work and time in making this meeting happen. Enjoy the welcome remarks and take the opportunity to meet and talk to the delegates.

KonGeoS	Susanne Lutz	Germany
DVW - Deutscher Verein für Vermessungswesen & BDV - Bund der öffentlich bestellten Vermessungsingenieure	Clemens Kiecke	Germany
CLGE - Council of European Geodetic Surveyors	CLGE President	Europe
FIG - International Federation of Surveyors	Rudolf Staiger	Germany
FIG Foundation	John Holst	U.S.A
FIG Young Surveyors Network	Eva-Maria Unger	Austria

#### Keynotes - Networking to the next level

The meeting will start with 4 keynotes which will give an overview of current initiatives, will give inspiration and ideas on how to network to the next level. Pay attention to our invited speakers since you will need the information later on in our next session. Also take the chance to ask questions, the keynotes are eager to answer all of them.

National Associations - We want you!	Clemens Kiecke	Germany
FIG Young Surveyors Network on the national level	Tomas Jylha	Finland
Nain se alkoi - This is how it started	Edgar Barrera	Portugal
The Portuguese YSN - From Lisbon to Berlin	Heli Kometsko	Germany
Working together - Embracing the Networks	Harah Pintata Kdkasal	Turkey
KonGeoS	Pedro Ortiz Toro	Spain
IGSO		
YSEN - Navigating the future of Young Surveyors in Europe		

### Pimpin our Future - Hand on, Shaping the Future

Chair: Christelle van den Berg & Dave Bruyning, The Netherlands

Pimpin our future! The participants will be separated in 4 groups. Each group working on one specific question each related to the previous Keynotes.

- 1) National Associations - We want you!
- 2) FIG Young Surveyors Network on the national level
- 3) Working together - Embracing the Networks
- 4) FIG YSEN - Navigating the future of Young Surveyors in Europe

Participants will be separated in groups working together on specific questions. 10 min presentation by each group

### 12:30 - 13:30 Lunch Break

#### Presentations of the Pimpin our Future Workshop

Chair: Diana Bedreovic, Croatia

#### Fit for Use - Technology shaping the Profession

In this session sponsors are invited to present on their latest technology. Sponsors will be challenged to present in Pecha Kucha style. 20 slides are shown for 20 seconds each (6 minutes and 40 seconds in total). The format keeps presentations concise and fast-paced.

#### CLGE Students' Contest 2014

Chair: Diana Bedreovic, Croatia

2 papers in Geodesy and Topography; 2 papers in GIS, Mapping and Cadastre; 2 papers Students and Youngsters Engagement (for students and young surveyors). Amongst these presentations, the audience will be the jury to bestow the Award for the best presentation. The awards for the three winning papers and the best presentation will be handed over during INTERGEO, on 8 October at 4:00 PM, on the Fair Ground.

#### Podium Discussion

#### Closing Ceremony

### 18:00 - 21:00 3rd CLGE Students' Meeting

Thanks to our sponsors and supporters CLGE, DVW and BDV we are invited to enjoy the CLGE Students' Meeting at the rooftop of the TU Berlin. Drinks and snacks are provided and you can now take the chance to get to know your European colleagues better and in a more casual atmosphere. The party will close at 21:00 o'clock and its then up to you what you make out of the night in Berlin.

#### Sponsors and Supporters of the 3rd CLGE Students' Meeting



## DETAILED PROGRAM, 8 OCTOBER 2014

### 09:00 - 16:00 INTERGEO

Take the chance to experience INTERGEO, the leading international conference trade fair for geodesy, geoinformation and land management! INTERGEO celebrates its 25th anniversary in Berlin. INTERGEO want to take this chance to demonstrate how geoinformation has moved to the heart of society and provides the key to solving the challenges of our 21st century world. Accelerating transport routes, mobility and expanding broadband will require the necessary legislation of our infrastructure - in the form of good governance via e-government. Climate change, the energy revolution and food production are never far from the headlines and thus well-deserving of their prominent place on the conference agenda.

### 16:00 - 18:00 CLGE Students' Contest

The CLGE Students' Contest got established in 2012 with the aim of promoting the engagement of Young Surveyors within the profession. Please join the CLGE Students' Contest award session during the INTERGEO. Support your friends and colleagues when the winners of the Contest will present their papers and will be awarded. Also probably its inspiring you to take part in this upcoming CLGE Students' Contest and probably then you are on the stage presenting.

# Homepage

like comment share

[http://www.fig.net/ys/YSEN\\_MEETING/2nd/index.htm](http://www.fig.net/ys/YSEN_MEETING/2nd/index.htm)



## DETAILED PROGRAM, 7 OCTOBER 2014

### 08:30 - 09:30 Registration

#### Opening Ceremony

*The 2nd FIG Young Surveyors European Meeting will be kicked off by short 5 minutes welcome remarks by the representatives of each organisation. Each organisation put a lot of effort, work and time in making this meeting happen. Enjoy the welcome remarks and take the opportunity to meet and talk to the delegates.*

KonGeoS	Susanne Lunz	Germany
DVW - Deutscher Verein fuer Vermessungswesen & BDVI - Bund der öffentlich bestellten Vermessungsingenieure	Clemens Kiepke	Germany
CLGE - Council of European Geodetic Surveyors	CLGE President	Europe
FIG - International Federation of Surveyors	Rudolf Staiger	Germany
FIG Foundation	John Hohol	U.S.A
FIG Young Surveyors Network	Eva-Maria Unger	Austria

#### Keynotes - Networking to the next level

*The meeting will start with 4 keynotes which will give an overview of current initiatives, will give inspiration and ideas on how to network to the next level. Pay attention to our invited speakers since you will need the information later on in our next session. Also take the chance to ask questions, the keynotes are eager to answer all of them.*

National Associations - We want you!	Clemens Kiepke	Germany
FIG Young Surveyors Network on the national level		
Näin se alkoi - This is how it started	Tuomas Jylha	Finland
The Portuguese YSN - From Lisbon to Berlin	Edgar Barreira	Portugal
Working together - Embracing the Networks		
KonGeoS	Eike Barnefske	Germany
IGSO	Ferah Pirlanta Köksal	Turkey
YSEN - Navigating the future of Young Surveyors in Europe	Pedro Ortiz Toro	Spain



## **Pimpin our Future - Hand on, Shaping the Future**

Chair: Christelle van den Berg & Dave Bruyning, The Netherlands

*Pimpin our future! The participants will be separated in 4 groups. Each group working on one specific question each related to the previous Keynotes.*

- 1) National Associations - We want you!*
- 2) FIG Young Surveyors Network on the national level*
- 3) Working together - Embracing the Networks*
- 4) FIG YSEN - Navigating the future of Young Surveyors in Europe*

*Participants will be separated in groups working together on specific questions.  
10 min presentation by each group*

## **12:30 - 13:30 Lunch Break**

### **Presentations of the Pimpin our Future Workshop**

#### **Fit for Use - Technology shaping the Profession**

Chair: Diana Becirevic, Croatia

*In this session sponsors are invited to present on their latest technology. Sponsors will be challenged to present in Pecha Kucha style. 20 slides are shown for 20 seconds each (6 minutes and 40 seconds in total). The format keeps presentations concise and fast-paced.*

#### **CLGE Students' Contest 2014**

Chair: Diana Becirevic, Croatia

*2 papers in Geodesy and Topography, 2 papers in GIS, Mapping and Cadastre, 2 papers Students and Youngsters Engagement (for students and young surveyors). Amongst these presentations, the audience will be the jury to bestow the Award for the best presentation. The awards for the three winning papers and the best presentation will be handed over during INTERGEO, on 8 October at 4.00 PM, on the Fair Ground.*

#### **Podium Discussion**

#### **Closing Ceremony**



## **18:00 - 21:00 3rd CLGE Students' Meeting**

*Thanks to our sponsors and supporters CLGE, DVW and BDVI we are invited to enjoy the CLGE Students' Meeting at the Rooftop of the TU Berlin. Drinks and snacks are provided and you can now take the chance to get to know your European colleagues better and in a more casual atmosphere. The party will close at 21.00 o'clock and its then up to you what you make out of the night in Berlin.*

### **Sponsors and Supporters of the 3rd CLGE Students' Meeting**



---

## **DETAILED PROGRAM, 8 OCTOBER 2014**

## **09:00 - 16:00 INTERGEO**

*Take the chance to experience INTERGEO, the leading international conference trade fair for geodesy, geoinformation and land management! INTERGEO celebrates its 20th anniversary in Berlin. INTERGEO want to take this chance to demonstrate how geoinformation has moved to the heart of society and provides the key to solving the challenges of our 21st century world. Modernising transport routes, mobility and expanding broadband all require the increasing digitization of our infrastructures - in the form of good governance via e-government. Climate change, the energy revolution and flood prevention are never far from the headlines and thus well-deserving of their prominent place on the conference agenda.*

## **16:00 - 18:00 CLGE Students' Contest**

*The CLGE Students' Contest got established in 2012 with the aim of promoting the engagement of Young Surveyors within the profession. Please join the CLGE Students' Contest award session during the INTERGEO. Support your friends and colleagues when the winners of the Contest will present their papers and will be awarded. Also probably its inspiring you to take part in the upcoming CLGE Students' Contest and probably then you are on the stage presenting.*



# Venue

---



TU Berlin, Strasse des 17. Juni 135, D - 10623 Berlin

Enter the building form 'Strasse des 17. Juni', Coordinates are 52° 30' 44.8" N, 13° 19' 37.4" E



# Organising Team

---





# Organising Team



## KONGEOS



**Annette Hadler,**  
Germany



**Luise Uhlig,**  
Germany

## FIG Young Surveyors Network



**Eva-Maria Unger,**  
Austria



**Paula Dijkstra,**  
The Netherlands

## FIG Young Surveyors Network Europe



**Ruben Martinez,**  
Spain



**Diana Bečirević,**  
Croatia



**Dave Bruyning,**  
The Netherlands



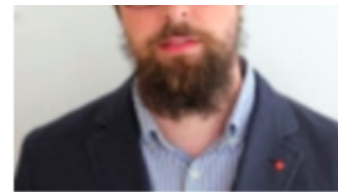
**Christelle van den Berg,**  
The Netherlands



Eva-Maria Unger,  
Austria



Paula Dijkstra,  
The Netherlands



Dave Bruyning,  
The Netherlands



Christelle van den Berg,  
The Netherlands

# Participants

---



around 150 participants

Albania, Austria, Croatia, **Denmark**, Estonia, Finland, Germany, Greece, Latvia, Poland, Romania, Serbia, Slovenia, Spain, The Netherlands, Turkey, UK

*(Indonesia, Philippines, USA, Israel, Nepal, Morocco, India, China...)*

# Sponsors & Supporters

---





# Sponsors & Supporters



Sponsors:



Supported by:



[http://www.fig.net/ys/YSEN\\_MEETING/2nd/index.htm](http://www.fig.net/ys/YSEN_MEETING/2nd/index.htm)

[\[Home\]](#) [\[Invitation\]](#) [\[Program\]](#) [\[Registration\]](#) [\[Venue\]](#) [\[Sponsors & Supporters\]](#) [\[Organisers\]](#)



## VENUE

The 2nd FIG Young Surveyors European meeting will be held in Berlin, Germany, at the Berlin Institute of Technology.

## Directions to TU Berlin

The main event will be held at the TU Berlin, located in district of Berlin Charlottenburg. Below you will find several ways to get there.

The maps shown below will give you an overview where to find the location, which is room H1028, main building H, first floor. The address is:

TU Berlin, Straße des 17. Juni 135, D - 10623 Berlin.