

# The Geospatial Broker

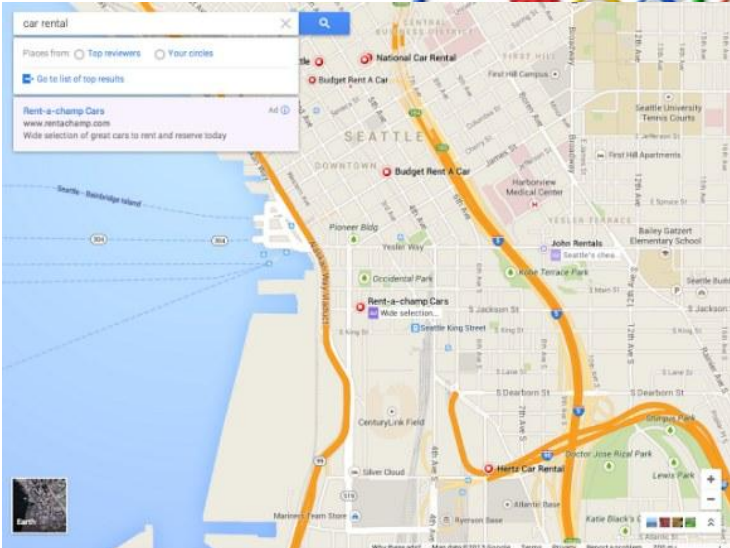
A new role for mapping and cadastral agencies



data



# Where are the NMCA data?



OpenStreetMap  
The Free Wiki World Map



**MICHELIN**





Dollar exchange rate

easing credit strains

MARKET JITTERS / spending power

commodities

mutual fund

CREDIT CRUNCH

under pressure

endororses stimulus package

slow revival

Financial crisis

dollar weakens

STOCK MARKET

Downturn

inflation earnings

Profits down

analysts

liquidity

# So what to do?

- No longer sole collectors and providers of data
- No longer exclusive and centralised collection
  
- Develop our role as trusted arbiter in the geospatial data field
- Improve visibility and quality of geodata
- Increase use of geodata

# Geodata as a public utility service



# What is a broker

- Service provider
- Brings buyer and seller together
- Facilitates the transaction

- Geo-Service provider
- Brings geoinformation producer and user together
- Facilitates the transaction

# Why NMCA as geospatial information broker

- Know the market
- Contacts and relations with end user
- Contacts and relations with external data providers
- Connect to great number of potential users
- Trusted source of data
- Respected authority

# Broker +

- Verification
- Data analysis
- Value added products and services



# Federal Government

  
Federal data en  
service providers



  
Federal users



## GEOBROKER

  
World users

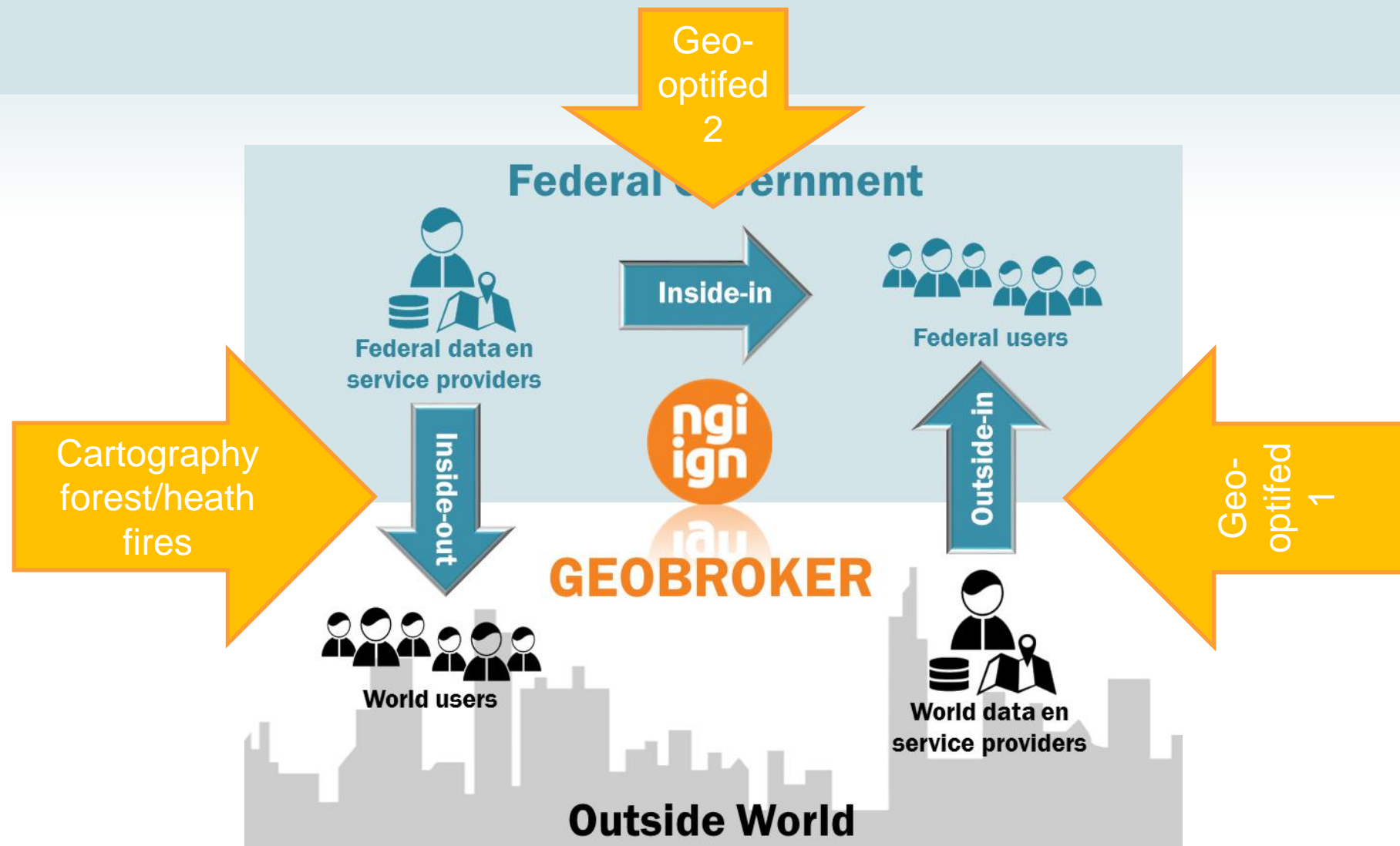
  
World data en  
service providers

## Outside World

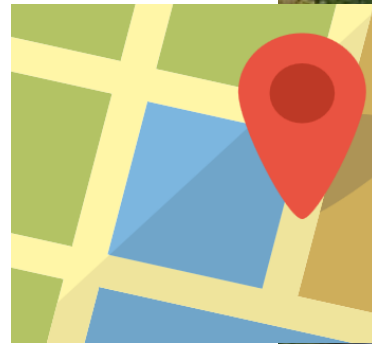
# NGI as a Broker



- Implementing INSPIRE
- Beyond INSPIRE
- Efficiency programme



- Needs
  - One dataset allowing localisation and navigation
  - One system for intervention planning



## ■ Role NGI

- « Federale aankoopcentrale »
- NGI acts on behalf of total federale government, local urgency services included
- NGI as centre of expertise (training)

## ■ Result

- **TomTom data**
  - Belgium + 50 km cross border
  - Vectorial core data with routing attributes, POI's and traffic history
  - Actual traffic info (live feed)
  - Raster data
- **4 releases per year**



# Geo-Optifed1



## ■ Users

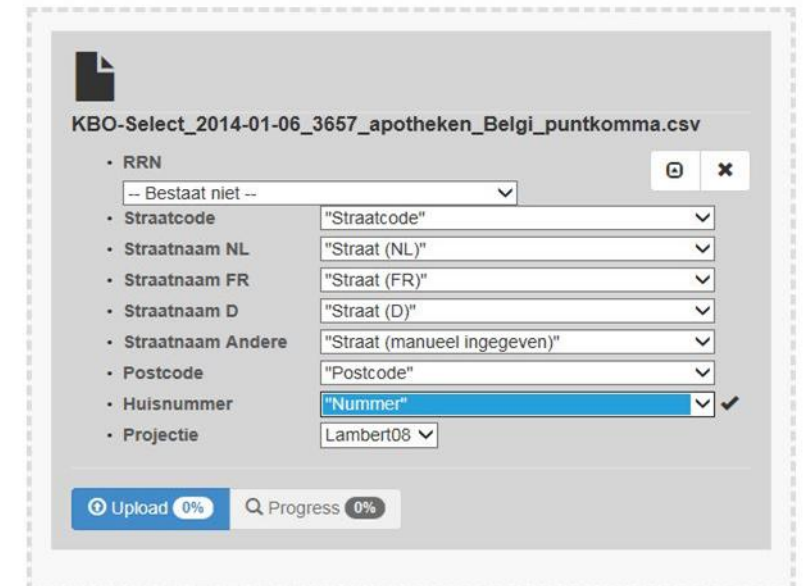
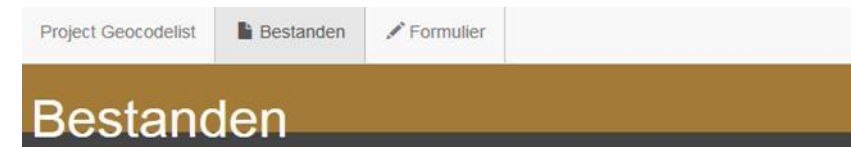
- **First user group**
  - Integrated Police
  - 112 service (fire dept. and urgency services)
  - FPS Interior (crisis centre)
  - ASTRID
  - FPS Mobility and transport
  - Defence
  - NGI
  - FPS Health
- **Later joining**
  - Ministry of Interior, ...
  - Open to any federal user



- Feasability study for federal geo-localisation service
  - More than only addresses
  - Aliases of official address
  - Vernacular place names
  - Constructions without address (tunnels – bridges - ...)
  - Complex structures needing additional information to the official address (big private recreational areas, harbour areas, etc.)



- Quick win: Webservice “GeocodeList”
  - Precise geographic position of addresses
  - Coordinate system of your choice *Lambert2008* or *Lambert72*
  - Covering total Belgium
  - Transform address lists to shape files
  - Keep your own attribute fields in your POI layer



# Cartography of forest and heath fires

## ■ Operational cartography for firefighting in nature (forest-heath fires)

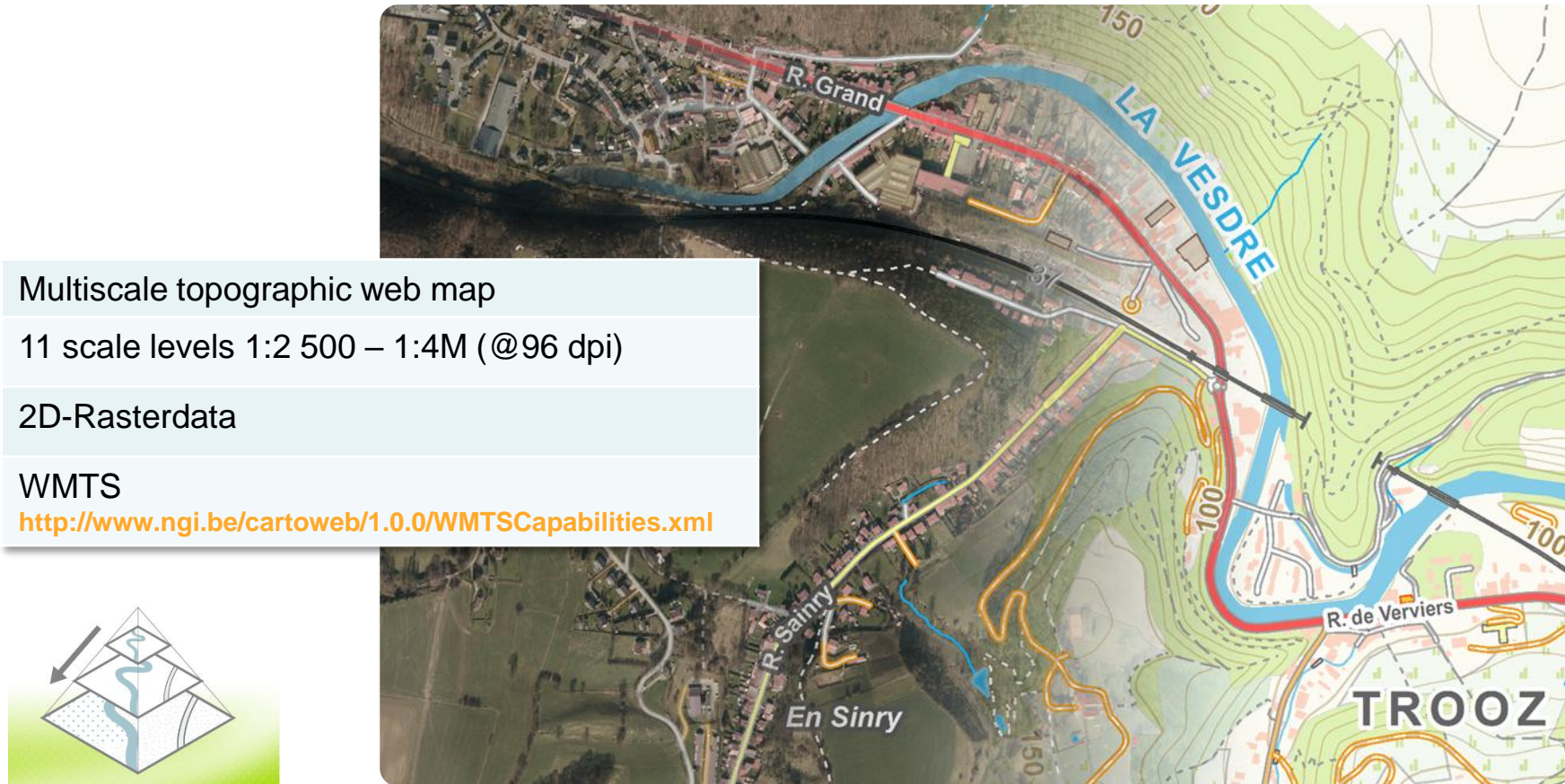
### ■ 5 Components

- Online access
- Base map
  - Grid / Indexsystem
  - Themātic map and datalayers
  - Printed maps / atlases
  - Web map-Application



# Cartography of forest and heath fires

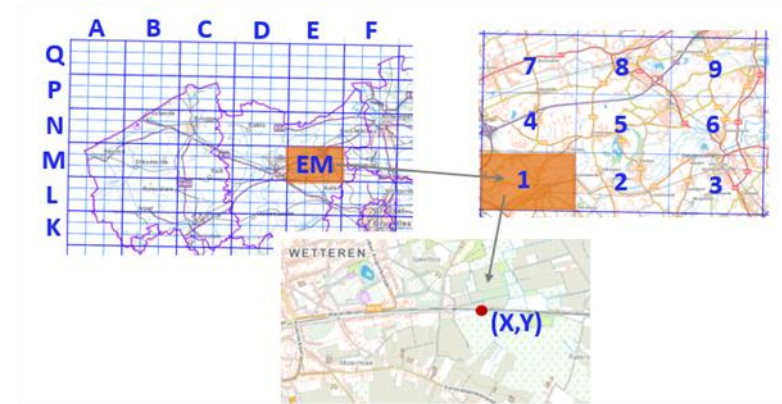
- Base map: *Cartoweb.be*



# Cartography of forest and heath fires

## ■ Grid – Indexsystem: proposal NGI

- **Uniform and common**
  - Quick and univoque
  - Easy communication of location (also between different urgency services)
- **Linked to map sheet division**
  - Find /print the right sheet quickly



## ■ Thematic symbols

- Evaluation en optimalisation of common symbols for thematic info
  - Readability and correct interpretation
  - Aligned to the base map service Cartoweb.be
  - Coherence between thematic symbols

 PEB	 PEB
 barrière	 barrière
 brandtoren	 brandtoren
 herkenbaar punt	 herkenbaar punt
 keerpunt	 keerpunt



# Cartography of forest and heath fires

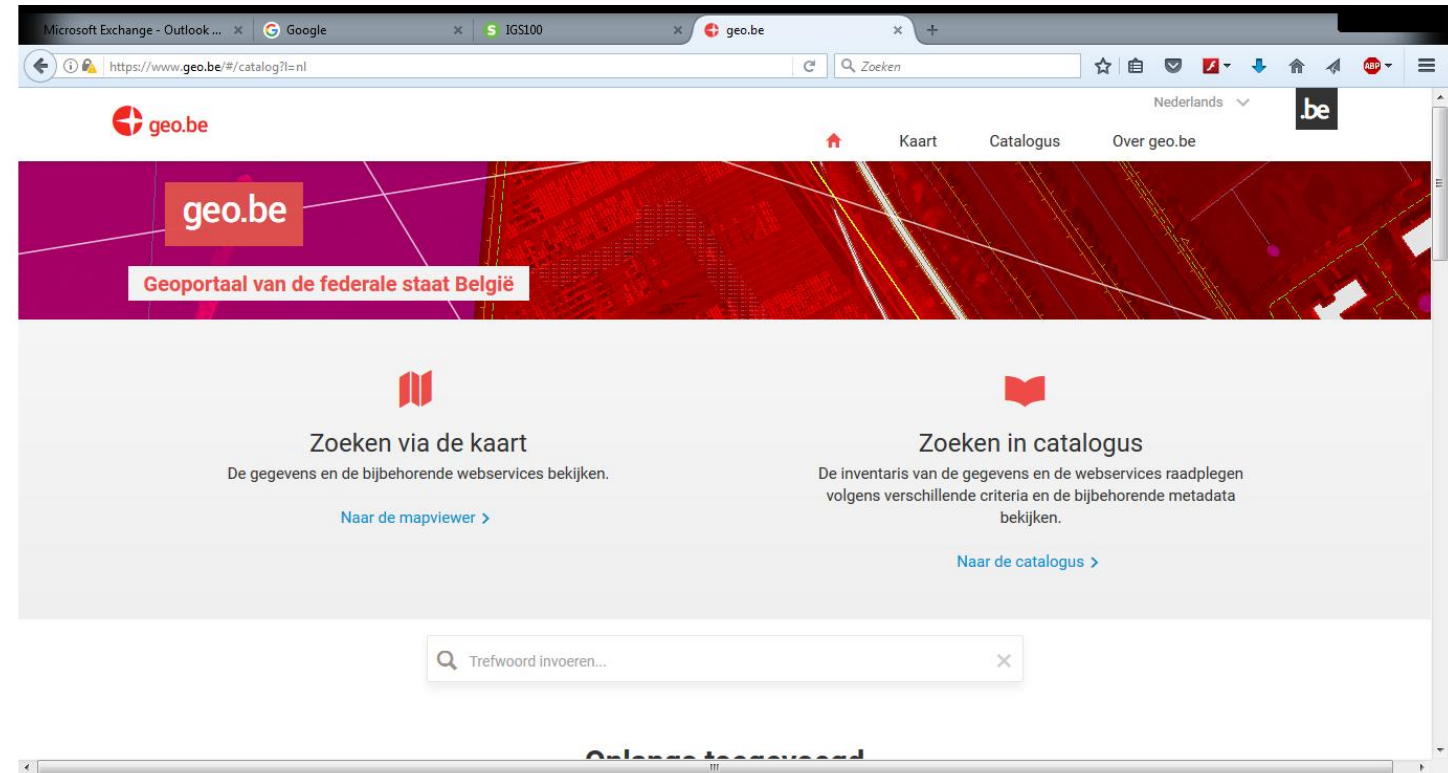


- PoC is being built by ASTRID – agency for urgency communication
- Now testing – field test 17/6

# Geo.be federal geoportal



- Linked to INSPIRE obligations
- Aiming all geodata with national coverage



## Strategy on geographical information at the federal level

- Broker role for NGI was confirmed by federal government
- Organisational change to leverage this role was discussed at political level – decision is to go ahead without major changes in the position of NGI
- message: “just do it”



Broker - The way ahead!





Thank you

ir Ingrid Vanden Berghe

administrateur-generaal NGI  
president EuroGeographics

[ivb@ngi.be](mailto:ivb@ngi.be)