



VIII CLGE Conference of the European Surveyor “BLUE SURVEYING”

Marine Cadastre and its importance

Magdalena Andersson, Lantmäteriet, Sweden



Sevilla (Spain) 27th October 2022 Hotel Barceló Sevilla Renacimiento





Sustainable land, marine and water management

- Importance of good knowledge and planning base
- Importance of comprehensive planning processes which encompasses land, coastal area and the sea. Overlapping planning instruments.
- Visualization of boundaries between different zones, e.g. private and public water
- Disposition rights
- Cadastre and Marine Cadastre

Cooperation
between
authorities!

Proposed joint initiative on coastal
mapping and measuring



SVT.SE

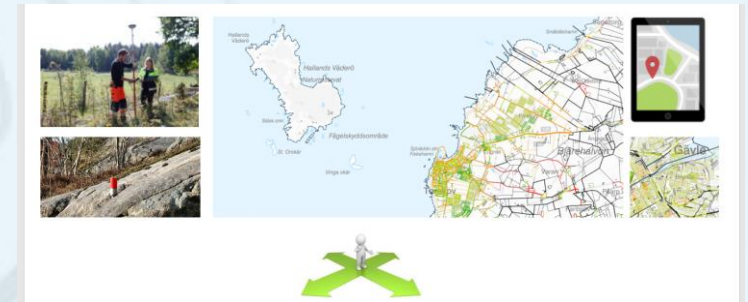
Sjöfartsverket vill göra nya mätningar av grunda vatten
Sjöfartsverket har tillsammans med Lantmäteriet och SGU lämnat e...





Importance of geodata

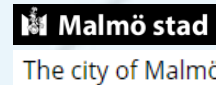
- In society and for the use of land and water.
- A central component for digital transformation and a sustainable society.
- Secure, fast and available; location and ownership





National strategy for geodata

- The strategy is developed by Lantmäteriet in cooperation with authorities and organizations in the Geodata council.
- Members of the council are appointed by the Government.
- A focus for the strategy is its contribution to the Swedish implementation of Agenda 2030.
- Participating authorities



Activities in the water area

Sweden has developed three marine spatial plans for its territorial waters and EEZ.

- Gulf of Bothnia
- Baltic Sea
- Skagerrak and Kattegatt



Diversity of rights, restrictions and activities (often conflicting and overlapping) in the marine environment

...desperately need to be managed by sound spatial planning and guaranteed by legal certainty of property rights and leases!



Swedish Territorial Waters



Boundaries in water; examples.

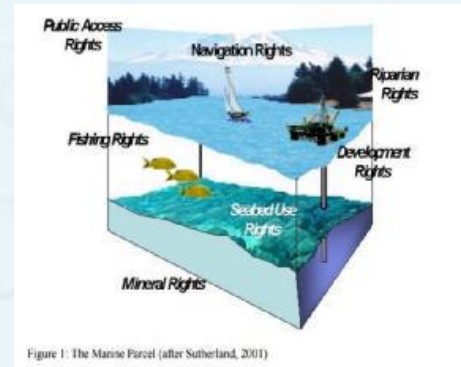


Maritime plan and digital cadastre map



Marine Cadastre

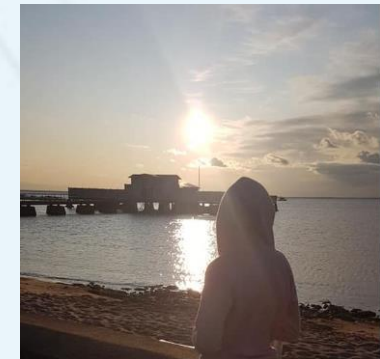
- Who?
 - Where?
 - What?
-
- Territory of Sweden in the Real Property Register, today only includes water that is part of the cadastral division; i.e. water not part of cadastral division but part of the territory is not included in the register.





Questions to study for a Marine Cadastre in Sweden – examples

- Legal status, representation of public water in the map
- Relation to the Real Property Register
- Good examples and studies – inhouse possibilities for writing of thesis on the subject.
- Etc.





VIII CLGE Conference of the European Surveyor “BLUE SURVEYING”

- Thank you for your attention!

